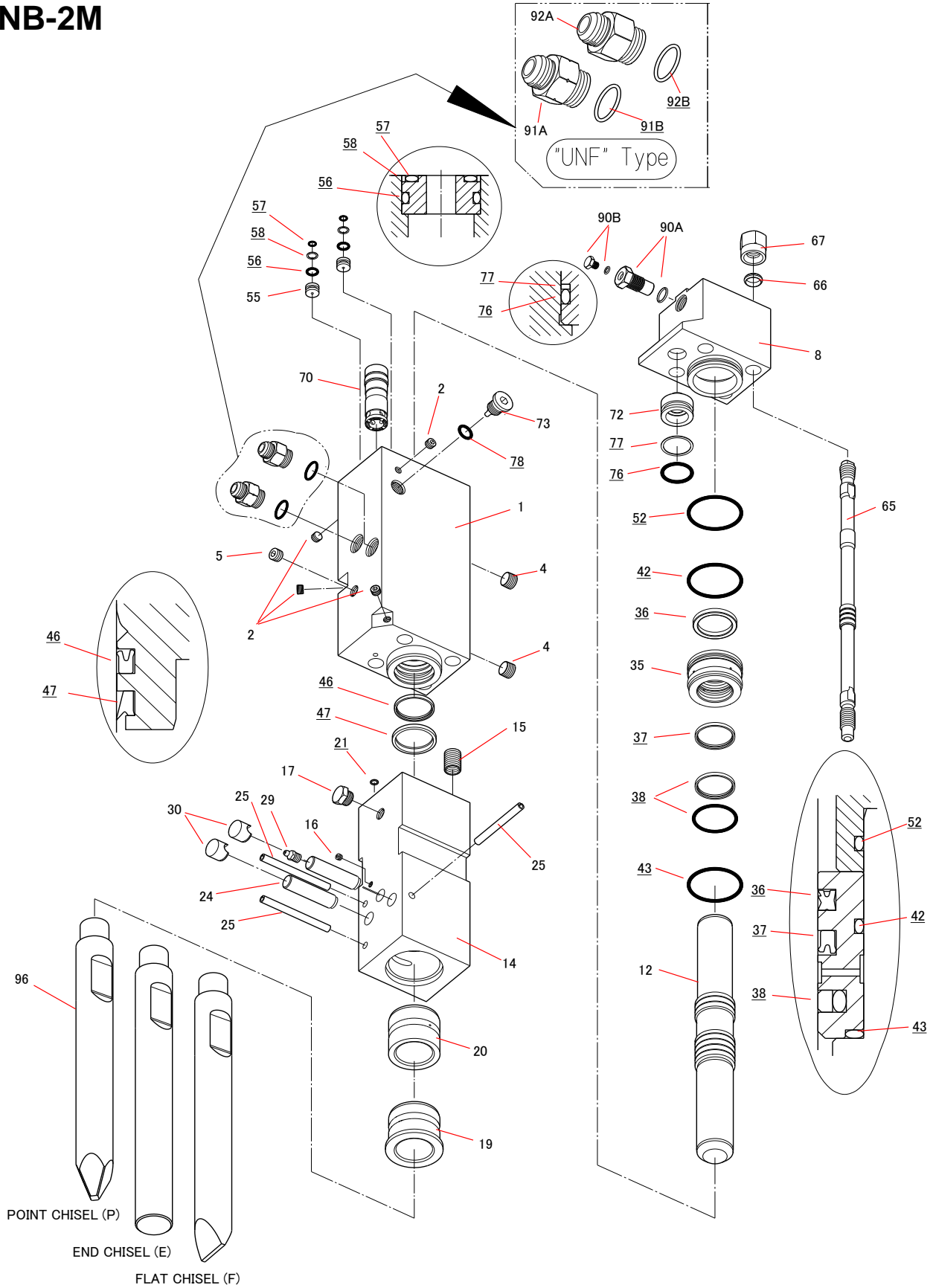


TNB-2M



TNB-2M

2017.05.26

No.6

Sym	Part Code	Description	Q'ty	Ser.No.	Int	Remarks	Kit	Sym	Part Code	Description	Q'ty	Ser.No.	Int	Remarks	Kit
	41511401C	Cylinder CP	1CP	525~				70	415114200	Control Valve	1	525~			
1	415114010	Cylinder	1	525~			C	72	415114220	Control Valve Cap	1	525~			
2	134901101	Hex Plug	4	525~			C	73	415114230	Choke Plug	1	525~			
4	134901106	Hex Plug	2	525~			C	76	131102004	O-Ring	1	525~			S
5	134901102	Hex Plug	1	525~			C	77	131123004	Back Up Ring	1	525~			S
8	415114030	Cylinder Cover	1	525~				78	131108014	O-Ring	1	525~			S
12	415110040	Piston	1	525~				90	41514130J	Gas Valve CP	1CP	525~			
	41511405D	Chisel Holder CP	1CP	525~				90A	41514130G	Gas Valve Body CP	1CP	525~			G
14	415114050	Chisel Holder	1	525~			H	90B	41514132E	Gas Valve Plug CP	1CP	525~			G
15	131020115	Helisert	4	525~			H	91A	182092010	Hose Adapter IN	1	525~		3/4-16UNF	
16	134901101	Hex Plug	1	525~			H	91B	131108023	O-Ring	1	525~			S
17	182135010	Plug	1	525~			H	92A	182092021	Hose Adapter OUT	1	525~		3/4-16UNF	
19	415110060	Chisel Bushing	1	525~			H	92B	131108023	O-Ring	1	525~			S
20	415114140	Chisel Holder Bushing	1	525~			H								
21	131101005	O-Ring	1	525~			S	96	415108410	Point Chisel (P)	1	525~		L=495	
24	415110100	Retainer Pin	2	525~				97	415108420	End Chisel (E)		525~		L=495	
25	130610110	Spring Pin	3	525~			H	98	415108430	Flat Chisel (FX)		525~		L=495	
29	135013001	Grease Nipple	1	525~			H								
30	136402032	Retainer Pin Plug	2	525~					41511480D	Seal Kit	1Set	525~			
35	415110130	Packing Bushing	1	525~											
36	131220010	Gas Seal	1	525~			S								
37	131225010	Oil Seal	1	525~			S								
38	131230010	Slide Ring S	1	525~			S								
42	131102011	O-Ring	1	525~			S								
43	131102111	O-Ring	1	525~			S								
46	131225011	Oil Seal	1	525~			S								
47	131219010	Dust Seal	1	525~			S								
52	131102011	O-Ring	1	525~			S								
55	415110300	Cylinder Plug	2	525~											
56	131108009	O-Ring	2	525~			S								
57	131101007	O-Ring	2	525~			S								
58	131121007	Back Up Ring	2	525~			S								
65	415110160	Side Bolt	4	525~											
66	136306002	Side Bolt Ring	4	525~											
67	134206013	Side Bolt Nut	4	525~											

Seal Kit consists of the parts marked "S".
(Individual seals NOT sold separately)

Cylinder CP consists of the parts marked "C".

Chisel Holder CP consists of the parts marked "H".
Quantity of the item #25 required for this CP is 2.

Gas Valve CP consists of the parts marked "G"
(#90A NOT sold separately)

O-RING is included to #91A & #92A UNF type HOSE ADAPTER.
(UNF type HOSE ADAPTER is not supplied as bare condition. O-ring always comes together.)

Long chisel and Core Chisel is an option.

INT(interchangeability)

- Interchangeable old ↔ new
- △ Interchangeable old → new
- ▲ Interchangeable old ← new
- × Not interchangeable