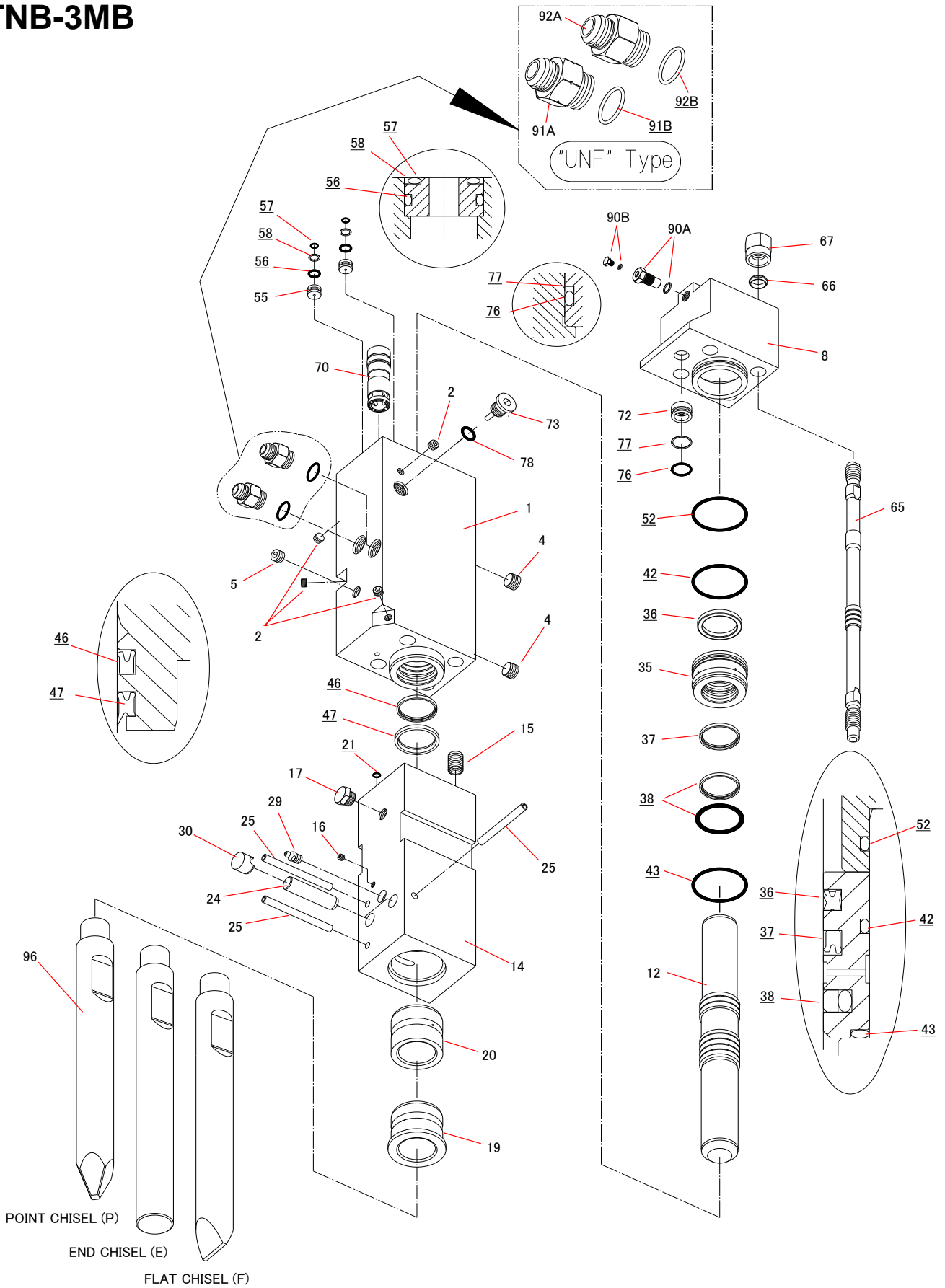


TNB-3MB



TNB-3MB

2017.05.26

No.7

Sym	Part Code	Description	Q'ty	Ser.No.	Int	Remarks	Kit	Sym	Part Code	Description	Q'ty	Ser.No.	Int	Remarks	Kit
	41511501C	Cylinder CP	1CP	1389~				76	131102004	O-Ring	1	1389~			S
1	415115010	Cylinder	1	1389~			C	77	131123004	Back Up Ring	1	1389~			S
2	134901101	Hex Plug	4	1389~			C	78	131108014	O-Ring	1	1389~			S
4	134901106	Hex Plug	2	1389~			C	90	41514130K	Gas Valve CP	1CP	1389~	▲		
5	134901102	Hex Plug	1	1389~			C	90A	41514130L	Gas Valve Body CP	1CP	13351~	▲		G
8	415115030	Cylinder Cover	1	1389~					41514130G	Gas Valve Body CP	1CP	1389~13350			G
12	415112040	Piston	1	1389~				90B	41514132E	Gas Valve Plug CP	1CP	10664~			G
	41563505D	Chisel Holder CP	1CP	1717~				91A	182092020	Hose Adapter IN "UNF"	1	1389~		3/4-16UNF	
14	415635050	Chisel Holder	1	1717~			H	91B	131108023	O-Ring	1	1389~			S
15	131020115	Helisert	4	1389~			H	92A	182092021	Hose Adapter OUT "UNF"	1	1389~		3/4-16UNF	
16	134901101	Hex Plug	1	1389~			H	92B	131108023	O-Ring	1	1389~			S
17	182135015	Plug	1	1389~			H								
19	415112060	Chisel Bushing	1	1389~			H	96	415635410	Point Chisel (P)	1	1717~		L=600	
20	415115140	Chisel Holder Bushing	1	1389~			H	97	415635420	End Chisel (E)		1717~		L=600	
21	131101005	O-Ring	1	1389~			S	98	415635430	Flat Chisel (F)		1717~		L=600	
24	415112100	Retainer Pin	2	1389~											
25	130610130	Spring Pin	3	1389~			H		41563580D	Seal Kit	1Set	10971~	○		
29	135013001	Grease Nipple	1	1389~			H		41511580D	Seal Kit	1Set	1389~10970			
30	136402033	Retainer Pin Plug	2	1389~											
35	415115130	Packing Bushing	1	1389~											
36	131220020	Gas Seal	1	1389~			S								
37	131225020	Oil Seal	1	1389~			S								
38	131230020	Slide Ring S	1	1389~			S								
42	131102013	O-Ring	1	1389~			S								
43	131102113	O-Ring	1	1389~			S								
46	131225021	Oil Seal	1	1389~			S								
47	131219021	Dust Seal	1	10971~	○		S								
	131219020	Dust Seal	1	1389~10970			S								
52	131102013	O-Ring	1	1389~			S								
55	415112300	Cylinder Plug	2	1389~											
56	131108013	O-Ring	2	1389~			S								
57	131101010	O-Ring	2	1389~			S								
58	131121010	Back Up Ring	2	1389~			S								
65	415112160	Side Bolt	4	1389~											
66	136306002	Side Bolt Ring	4	1389~											
67	134206013	Side Bolt Nut	4	1389~											
70	415115200	Control Valve	1	1389~											
72	415115220	Control Valve Cap	1	1389~											
73	415115230	Choke Plug	1	1389~											

Seal Kit consists of the parts marked "S".
(Individual seals NOT sold separately)

Cylinder CP consists of the parts marked "C".

Chisel Holder CP consists of the parts marked "H".
Quantity of the item #25 required for this CP is 2.

Gas Valve CP consists of the parts marked "G"
(Item #90A NOT sold separately)

O-RING is included to #91A & #92A UNF type HOSE ADAPTER.
(UNF type HOSE ADAPTER is not supplied as bare condition. O-ring always comes together.)

Long chisel is an option.

INT(interchangeability)

○ Interchangeable old ↔ new

△ Interchangeable old → new

▲ Interchangeable old ← new

× Not interchangeable