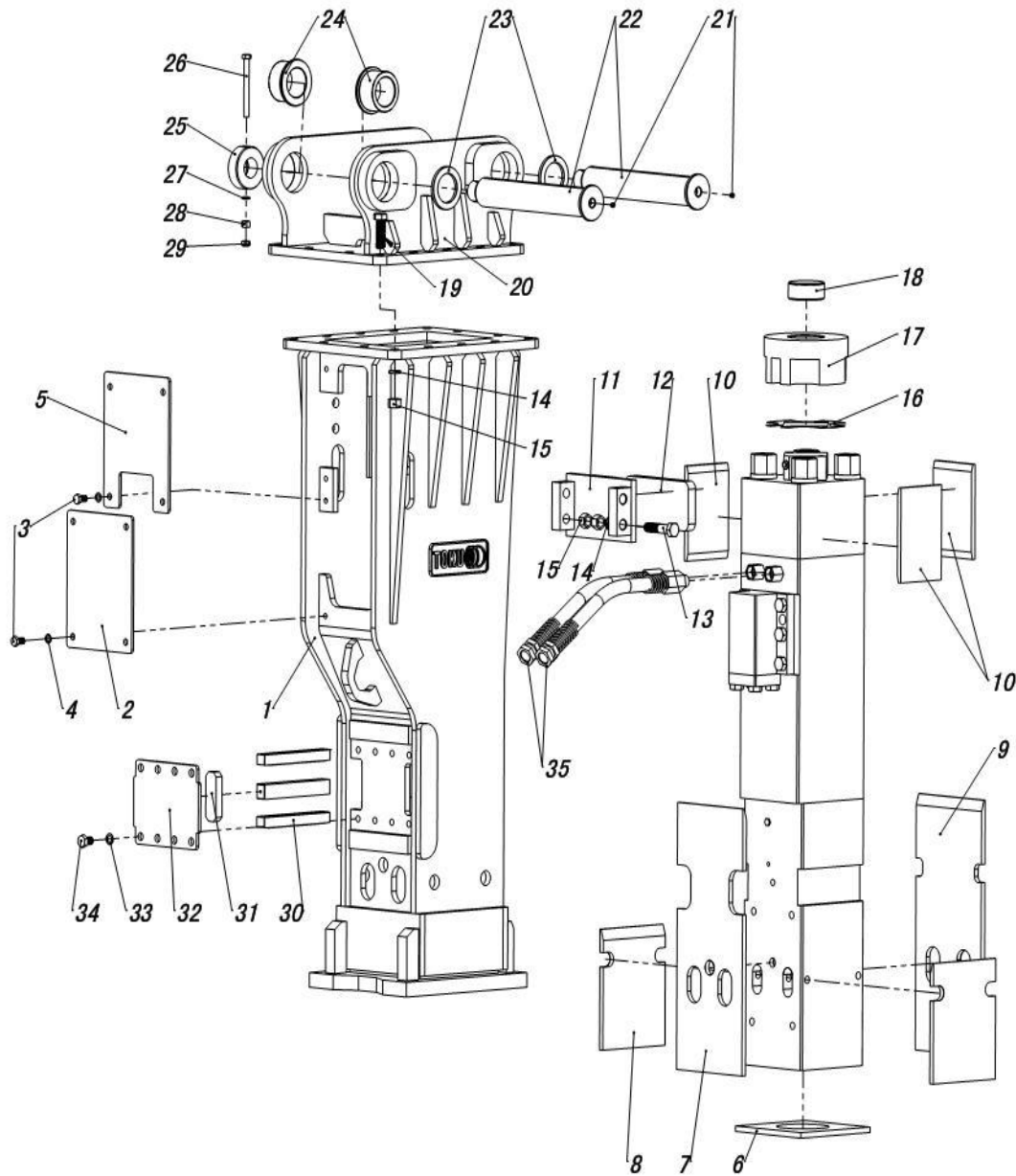


## TNB-151LU KEY TYPE BOX BRACKET



NO.	DESCRIPTION	PART CODE.	QUANTITY
1	KEY TYPE BOX BRACKET	BKT-151LU	1
2	CONTROL VALVE PLATE	151002	1
3	H.T BOLT [M16x35]	BLT-M16-35	8
4	SPRING WASHER [M16]	WASHER-M16	8
5	GAS VALVE COVER PLATE	151005	1
6	UNDER SPACER	151006	1
7	CHISEL HOLDER SPACER	151007	1
8	SIDE SPACER	151008-2	2
9	BACK SPACER	151009-2	1
10	SMALL SPACER	151010	3
11	GUIDE PLATE	151011	1
12	GUIDE SPACER	151012-2	1
13	H.T BOLT [M24x110]	BLT-M24-110	4
14	SPRING WASHER [M24]	WASHER-M24	16
15	H.T NUT [M24]	NUT-M24	22
16	ADJUST MAT	151016	1
17	ISOLATOR TOP COVER	151017	1
18	NYLON POLE	151018	1
19	H.T BOLT [M24x80]	BLT-M24-80	14
20	TOP CAP	PER MACHINE MODEL	1
21	GREASE NIPPLE	N/A	2
22	BRACKET PIN	PER MACHINE MODEL	2
23	BRACKET PIN STOPPER	UPON REQUEST	2
24	BRACKET BUSH	PER MACHINE MODEL	4
25	BRACKET RING	UPON REQUEST	2
26	H.T BOLT [M16x160]	UPON REQUEST	2
27	SPRING WASHER [M16]	UPON REQUEST	2
28	H.T NUT [M16]	UPON REQUEST	2
29	U NUT [M16]	UPON REQUEST	4
30	ASSEMBLED LOCALIZER	151030	2 SETS
31	RUBBER PLATE	151031	2
32	COVER PLATE	151032	1
33	SPRING WASHER [M20]	WASHER-M20	8
34	H.T BOLT [M20x30]	BLT-M20-30	8
35	HOSE	SGH-2109	2