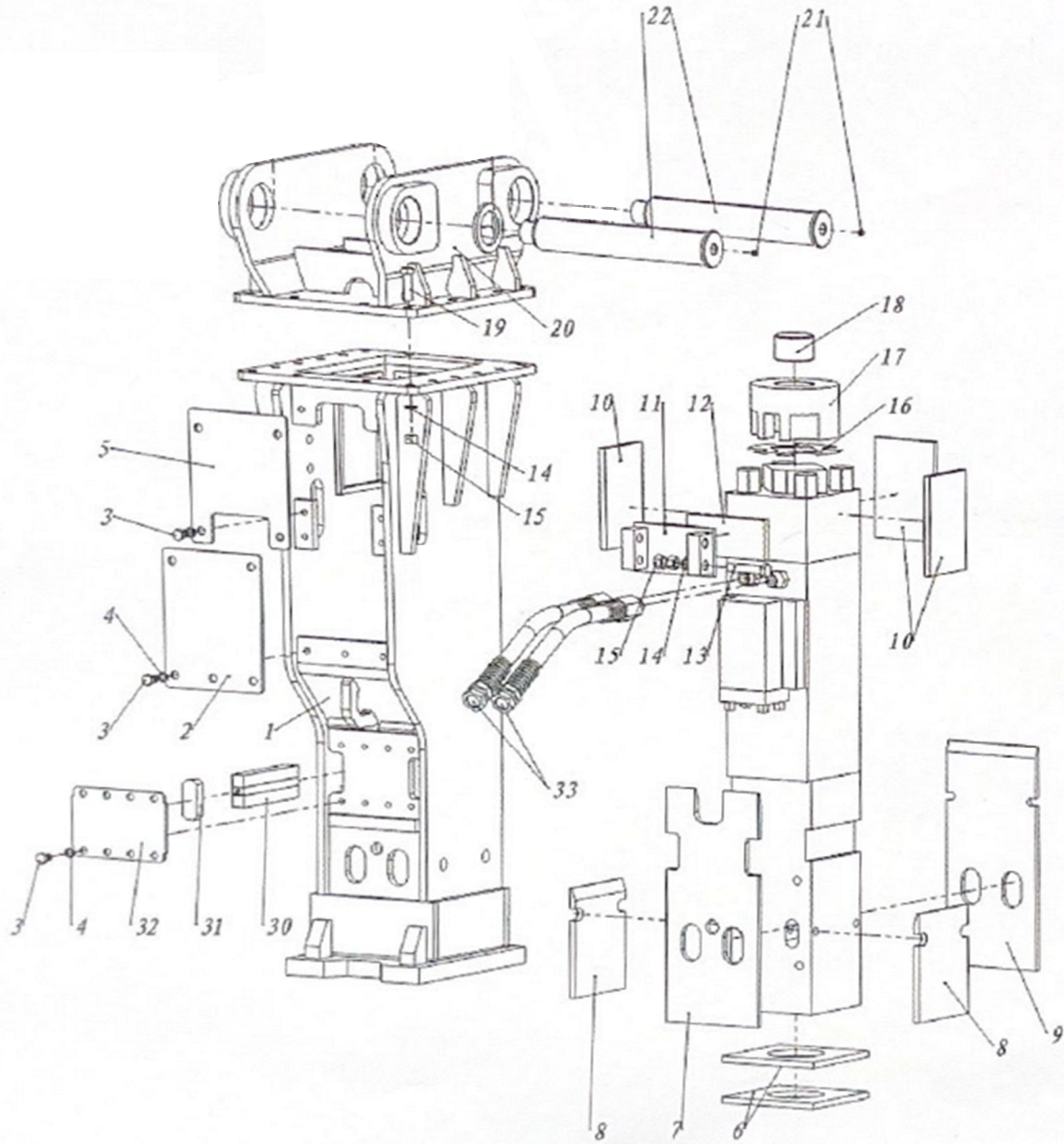


# TNB-100 BOX BRACKET



## Parts

41581329A					
Sym	Part Code	Description	Qty	Int	Kit
1	BOX BRACKET	BKT-100-ST W/O TC	1		
2	CONTROL VALVE PLATE	100002	1		B
3	H.T BOLT [M16x30]	BLT-M16 X 30	17		B
4	SPRING WASHER [M16]	WASHER-M16	17		B
5	GASVALVE COVER PLATE	100005	1		B
6	UNDER SPACER	100006	2		B
7	CHISEL HOLDER SPACER	100007	1		B
8	SIDE SPACER	100008	2		B
9	BACK SPACER	100009	1		B
10	SMALL SPACER	100010	3		B
11	GUIDE PLATE	100011	1		B
12	GUIDE SPACER	100012	1		B
13	H.T BOLT [M20x100]	BLT-M20-100	4		B
14	SPRING WASHER [M20]	WASHER-M20	20		B
15	H.T NUT [M20]	NUT-M20-HT	24		B
16	ADJUST MAT	100016	1		B
17	ISOLATOR TOP COVER	100017	1		B
18	NYLON POLE	100018	1		B
19	H.T BOLT [M20x70]	BLT-M20-70	16		B
20	TOP CAP	PER MACHINE MODEL	1		
21	GREASE NIPPLE	N / A	2		B
22	BRACKET PIN SET	PER MACHINE MODEL	1		T
30	RUBBER PLATE	100030	2 SET		B
31	COVER PLATE	100031	1		B
32	HOSE	SGH-2109	2		B

Box Bracket CP consists of parts marked "B"

Top Cap consists of parts marked "T"

For Decal and/or Tool Box information, please contact your Dealer

INT(interchangeability)

- Interchangeable old ↔ new
- △ Interchangeable old → new
- ▲ Interchangeable old ← new
- × Not interchangeable