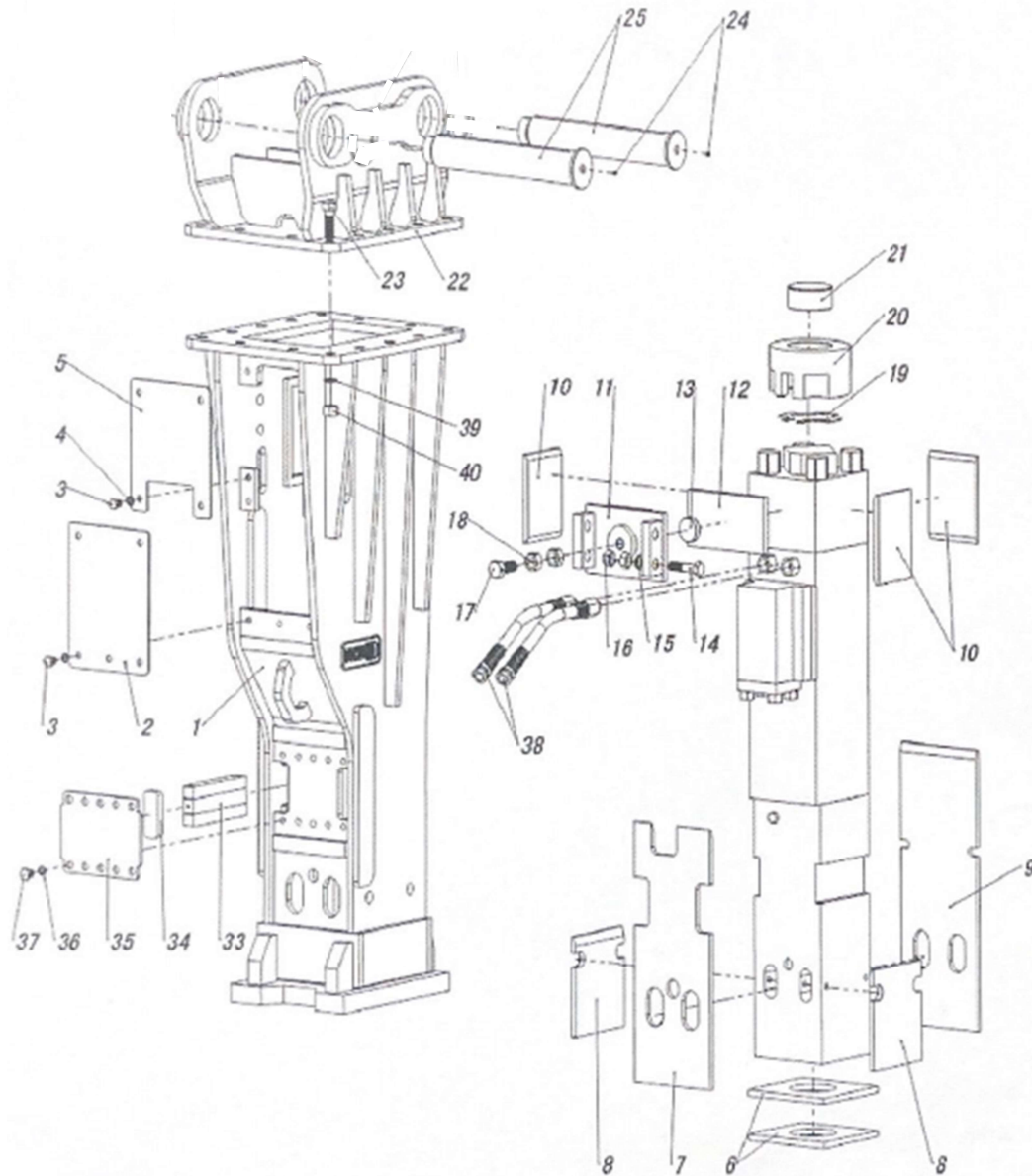


# TNB-310LU BOX BRACKET



## Parts

Sym	Part Code	Description	Qty	Int	Kit
1	BKT-310-ST-W / O TC	TOPMOUNTBOXBRACKETA	1		B
2	310002	CONTROL VALVE PLATE	1		B
3	BLT-M20-30	H.T BOLT [M20x30]	9		B
4	WASHER-M20	SPRING WASHER [M20]	9		B
5	310005	GAS VALVE COVER PLATE	1		B
6	310006	UNDER SPACER	2		B
7	310007	CHISEL HOLDER SPACER	1		B
8	310008	SIDE SPACER	2		B
9	310009	BACK SPACER	1		B
10	310010	SMALL SPACER	3		B
11	310011	GUIDE PLATE	1		B
12	310012	GUIDE SPACER	1		B
13	310013	SMALL NYLON POLE	1		B
14	BLT-M30-120	H.T BOLT [M30x120]	4		B
15	WASHER-M30	SPRING WASHER [M30]	4		B
16	NUT-M36-HT	H.T NUT [M30]	8		B
17	BLUT-M36-120	H.T BOLT [M36]	1		B
18	NUT-M36-HT	H.T NUT [M36]	2		B
19	310019	ADJUST MAT	1		
20	310020	ISOLATOR TOP COVER	1		B
21	310021	NYLON POLE	1		B
22	PER MACH. MODEL	TOP CAP	1		
23	BLT-M39-105	H.T BOLT [M39X105]	14		B
24	N / A	GREASE NIPPLE	2		B
25	PER MACH. MODEL	BRACKET PIN KIT	1		T
33	310033	ASSEMBLED LOCALIZER	2 SET		B
34	310034	RUBBER PLATE	2		B
35	310035	COVER PLATE	2		B
36	WASHER M24	SPRING WASHER [M24]	10		B
37	BLT-M24-35	H.T BOLT [M24X35]	10		B
38	SGH-2121	HOSE	2		B
39	WASHER-M39	SPRING WASHER [M39]	14		B
40	NUT-M39-HT	H.T NUT [M39]	14		B

Box Bracket CP consists of parts marked "B"

Top Cap consists of parts marked "T"

For Decal and/or Tool Box information, please contact your Dealer

INT(interchangeability)

- Interchangeable old ↔ new
- △ Interchangeable old → new
- ▲ Interchangeable old ← new
- × Not interchangeable