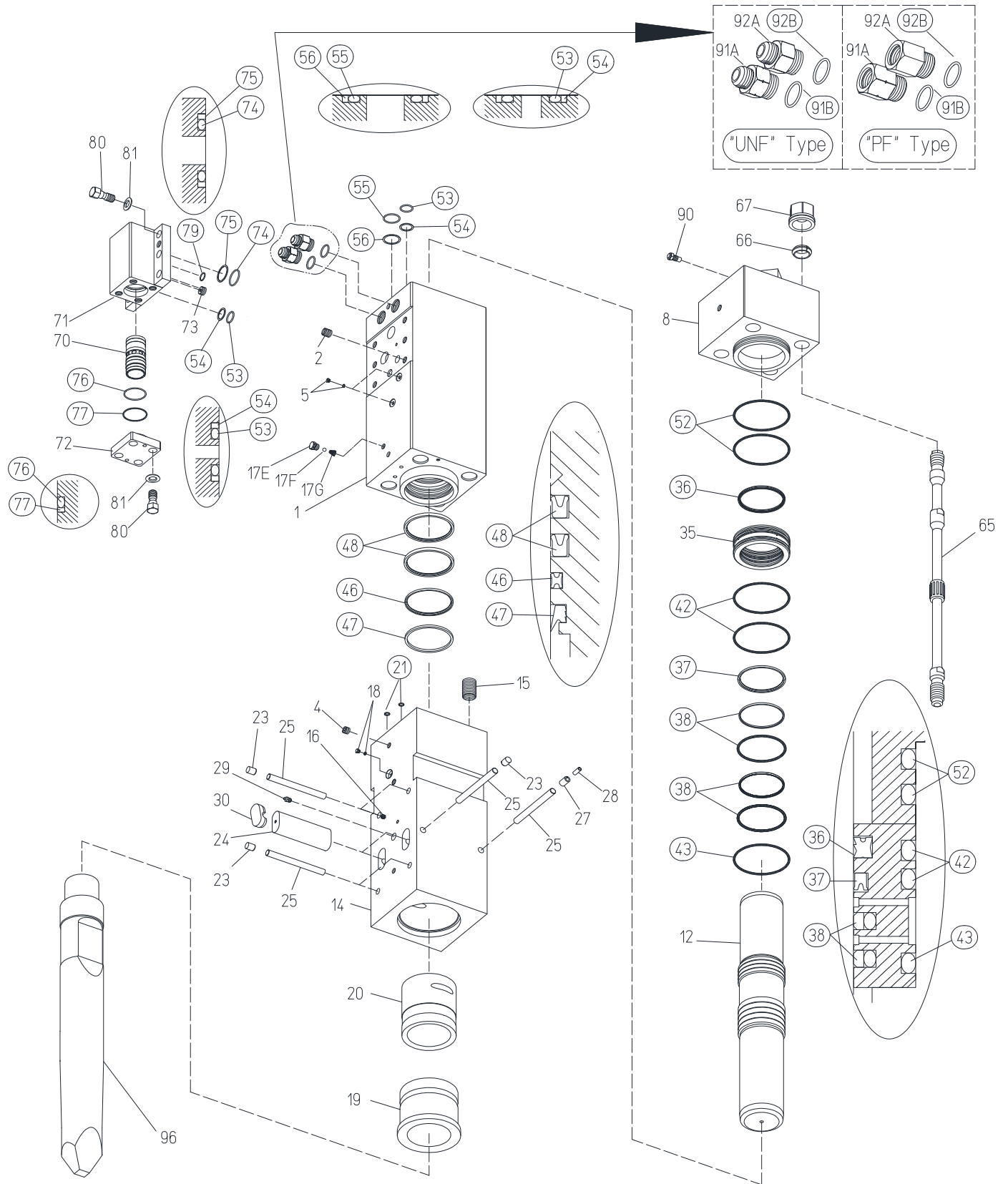


# TNB-151LU



# Parts

2012.01.16

No.08

| Sym | Part Code | Description               | Q'ty | Ser.No.   | Int | Remarks | Kit |
|-----|-----------|---------------------------|------|-----------|-----|---------|-----|
|     | 41569401M | Cylinder CP               | 1CP  | 6630-     | ×   |         |     |
|     | 41569401L | Cylinder CP               | 1CP  | 3945-6629 | ×   |         |     |
|     | 41569401G | Cylinder CP               | 1CP  | 2958-3944 |     |         |     |
| 1   | 415694012 | Cylinder                  | 1    | 6630-     | ×   |         | C   |
|     | 415694011 | Cylinder                  | 1    | 2958-6629 |     |         | C   |
| 2   | 131024010 | Helisert                  | 6    | 2958-     |     |         | C   |
| 3   | 134903001 | Hex Plug                  | 1    | 2958-6629 |     |         | C   |
| 4   | 134901104 | Hex Plug                  | 1    | 6630-     |     |         | H   |
|     | 134901104 | Hex Plug                  | 2    | 3945-6629 |     |         | C,H |
|     | 134901104 | Hex Plug                  | 2    | 2958-3944 |     |         | C   |
| 5   | 134912002 | Hex Socket Flange Plug    | 2    | 6630-     |     |         | C   |
|     | 134912002 | Hex Socket Flange Plug    | 1    | 2958-6629 |     |         | C   |
| 8   | 415185030 | Cylinder Cover            | 1    | 2958-     |     |         |     |
| 12  | 415693040 | Piston                    | 1    | 2958-     |     |         |     |
|     | 41518605A | Chisel Holder CP          | 1CP  | 3945-     | ×   |         |     |
|     | 41518605H | Chisel Holder CP          | 1CP  | 2958-3944 |     |         |     |
| 14  | 415186057 | Chisel Holder             | 1    | 2958-     |     |         | H   |
| 15  | 131042015 | Helisert                  | 4    | 2958-     |     |         | H   |
| 16  | 134901102 | Hex Plug                  | 1    | 2958-     |     |         | H   |
|     |           | Air Cap CP                | 1    | 3945-     |     |         | C   |
|     |           | Air Cap CP                | 1    | 2958-3944 |     |         | H   |
| 17E | 415143660 | Air Cap                   | 1    | 3945-     |     |         | A,C |
|     | 415143660 | Air Cap                   | 1    | 2958-3944 |     |         | A,H |
| 17F | 130505028 | Ball                      | 1    | 3945-     |     |         | A,C |
|     | 130505028 | Ball                      | 1    | 2958-3944 |     |         | A,H |
| 17G | 130806014 | Air Cap Spring            | 1    | 3945-     |     |         | A,C |
|     | 130806014 | Air Cap Spring            | 1    | 2958-3944 |     |         | A,H |
| 18  | 182136006 | O-Ring Plug               | 1    | 2958-     |     |         | H   |
| 19  | 415147060 | Chisel Bushing            | 1    | 2958-     |     |         | H   |
| 20  | 415148140 | Chisel Holder Bushing     | 1    | 2958-     |     |         | H   |
| 21  | 131101013 | O-Ring                    | 2    | 2958-     |     |         | S   |
| 23  | 136402011 | Retainer Pin Stopper Plug | 5    | 2958-     |     |         | H   |
| 24  | 415186100 | Retainer Pin              | 2    | 2958-     |     |         |     |
| 25  | 415148250 | Stopper Pin               | 6    | 2958-     |     |         | H   |
| 27  | 130620030 | Spring pin                | 1    | 2958-     |     |         | H   |
| 28  | 130613030 | Spring pin                | 1    | 2958-     |     |         | H   |
| 29  | 135013002 | Grease Nipple             | 1    | 2958-     |     |         | H   |
| 30  | 136402040 | Retainer Pin Plug         | 2    | 2958-     |     |         |     |
| 35  | 415693130 | Packing Bushing           | 1    | 2958-     |     |         |     |
| 36  | 131220150 | Gas Seal                  | 1    | 2958-     |     |         | S   |
| 37  | 131225150 | Oil Seal                  | 1    | 2958-     |     |         | S   |
| 38  | 131230150 | Slide Ring S              | 2    | 2958-     |     |         | S   |
| 42  | 131102029 | O-Ring                    | 2    | 2958-     |     |         | S   |
| 43  | 131102129 | O-Ring                    | 1    | 2958-     |     |         | S   |
| 46  | 131233150 | X-Seal                    | 1    | 7420-     | ▲   |         | S   |
|     | 131225141 | Oil Seal                  | 1    | 2958-7419 |     |         | S   |
| 47  | 131219140 | Dust Seal                 | 1    | 2958-     |     |         | S   |
| 48  | 131227151 | Buffer Ring               | 2    | 2958-     |     |         | S   |
| 52  | 131102029 | O-Ring                    | 2    | 2958-     |     |         | S   |
| 53  | 131101034 | O-Ring                    | 3    | 2958-     |     |         | V,S |
| 54  | 131121034 | Back Up Ring              | 3    | 2958-     |     |         | V,S |
| 55  | 131101045 | O-Ring                    | 1    | 2958-     |     |         | S   |
| 56  | 131121045 | Back Up Ring              | 1    | 2958-     |     |         | S   |
| 65  | 415185160 | Side Bolt                 | 4    | 2958-     |     |         |     |
| 66  | 136306016 | Side Bolt Ring            | 4    | 2958-     |     |         |     |

| Sym | Part Code | Description            | Q'ty | Ser.No.   | Int | Remarks      | Kit |
|-----|-----------|------------------------|------|-----------|-----|--------------|-----|
| 67  | 134206017 | Side Bolt Nut          | 4    | 2958-     |     |              |     |
| 70  | 415147200 | Control Valve          | 1    | 2958-     |     |              |     |
| 71  | 415694211 | Control Valve Box      | 1    | 6630-     | x   |              |     |
|     | 415147210 | Control Valve Box      | 1    | 2958-6629 |     |              |     |
| 72  | 415147220 | Control Valve Cap      | 1    | 2958-     |     |              |     |
| 73  | 415156230 | Choke Plug             | 1    | 2958-     |     |              |     |
| 74  | 131101049 | O-Ring                 | 2    | 2958-     |     |              | V,S |
| 75  | 131121049 | Back Up Ring           | 2    | 2958-     |     |              | V,S |
| 76  | 131102010 | O-Ring                 | 1    | 2958-     |     |              | V,S |
| 77  | 131122010 | Back Up Ring           | 1    | 2958-     |     |              | V,S |
| 79  | 131108023 | O-Ring                 | 1    | 6630-     |     |              | S   |
| 80  | 131506010 | Hex Bolt               | 10   | 2958-     |     |              |     |
| 81  | 131313124 | Washer                 | 10   | 2958-     |     |              |     |
| 90  | 41514130E | Gas Valve CP           | 1CP  | 2958-     |     |              |     |
| 91A | 41518535A | Hose Adapter IN "PF"   | 1    | 2958-     |     | PF1          |     |
| 91A | 182092150 | Hose Adapter IN "UNF"  | 1    | 2958-     |     | 1-5/16-12UNF |     |
| 91B | 131108038 | O-Ring                 | 1    | 2958-     |     |              | S   |
| 92A | 41515648E | Hose Adapter OUT "PF"  | 1    | 2958-     |     | PF1          |     |
| 92A | 182092141 | Hose Adapter OUT "UNF" | 1    | 2958-     |     | 1-5/16-12UNF |     |
| 92B | 131108038 | O-Ring                 | 1    | 2958-     |     |              | S   |
| 96  | 415186410 | Moil Tool              | 1    | 2958-     |     | L=1170       |     |
|     | 415186420 | Blunt Tool             |      | 2958-     |     | L=1170       |     |
|     | 415186430 | Chisel Tool            |      | 2958-     |     | L=1170       |     |
|     |           |                        |      |           |     |              |     |
|     | 41569480K | Seal Kit               | 1Set | 7420-     | ▲   |              |     |
|     | 41569480J | Seal Kit               | 1Set | 6630-7419 | ▲   |              |     |
|     | 41569480H | Seal Kit               | 1Set | 2958-6629 |     |              |     |

Air Cap CP consists of part marked "A"  
 (#17E, 17F, & 17G NOT sold separately)

Cylinder CP consists of the parts marked "C".

Chisel Holder CP consists of the parts marked "H".

O-RING is included to #91A & #92A

Seal Kit consists of the parts marked "S".  
 (Individual seals NOT sold separately)

Contral Valve Seal Kit consists of parts marked "V"  
 (Individual seals NOT sold separately)

INT(interchangeability)  
 ○ Interchangeable old ↔ new  
 △ Interchangeable old → new  
 ▲ Interchangeable old ← new  
 × Not interchangeable