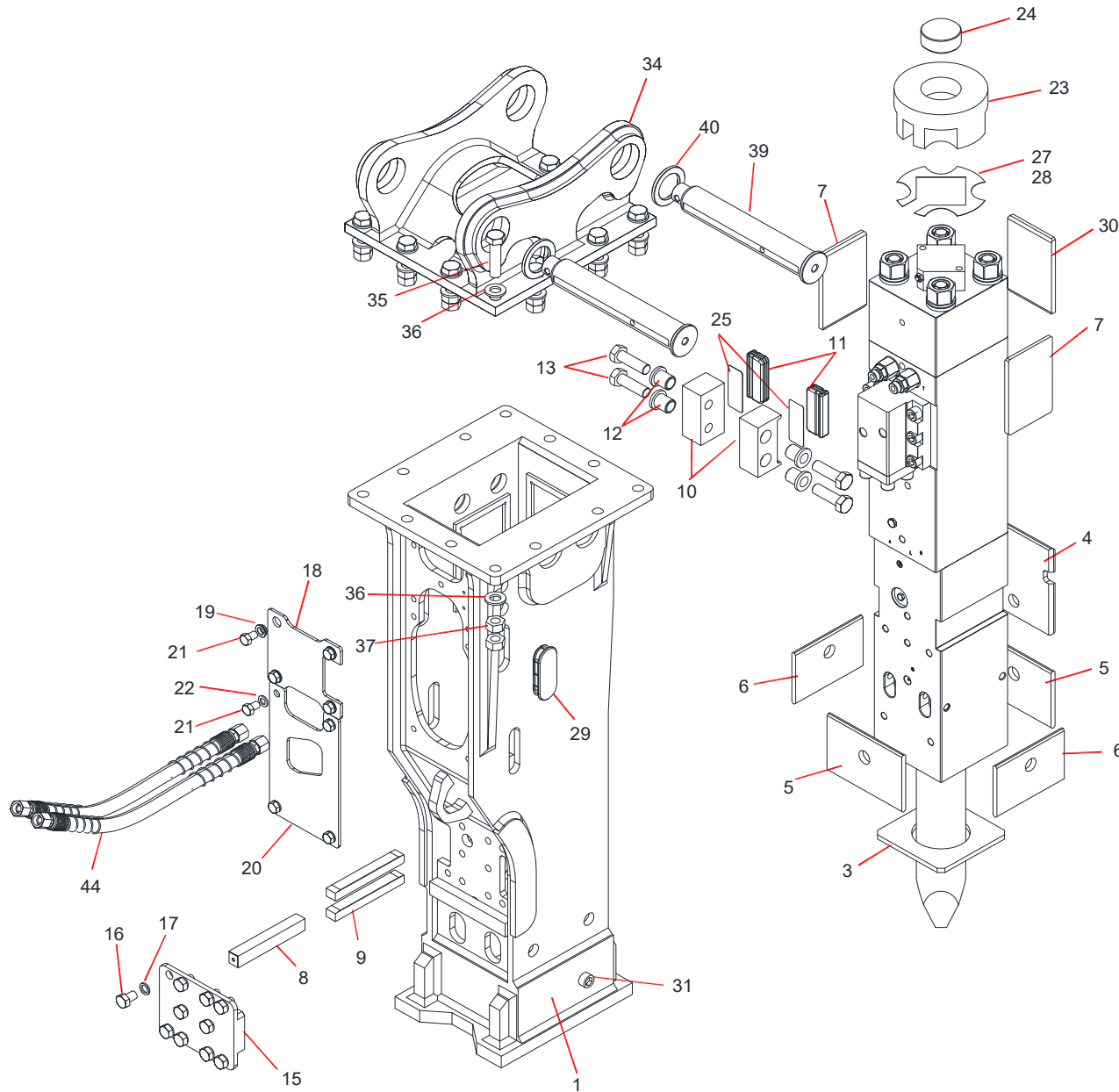


TNB-151LU1-K BOX BRACKET

TNB-151LU2-K BOX BRACKET



Parts

2020.5.20

41581329A		No.6			
Sym	Part Code	Description	Qty	Int	Kit
1	BKT-151LU2	BOX BRACKET CP	1	▲	
	BKT-151LU1-K2	BOX BRACKET CP	1		
3	151006-K1	UNDER SPACER	1	▲	B
	151006-K	UNDER SPACER	1		B
4	151009-K1	LOWER SPACER UPPER REAR	1	▲	B
	151009-K	BACK SPACER	1		B
5	151007-K1	LOWER SPACER FRONT/REAR	2	▲	B
	151007-K	CHISEL HOLDER SPACER	1		B
6	151008-K1	LOWER SPACER SIDE	2	▲	B
	151008-K	SIDE SPACER	2		B
7	151010	UPPER SPACER SIDE	2	▲	B
8	151030-K	ASSEMBLED LOCALIZER	2		B
9					
10	151011-K1	GUIDE BLOCK	2	▲	B
	151011-K	GUIDE PLATE	1		B
11	151012-K1	GUIDE SPACER	2	▲	B
	151012-K	GUIDE SPACER	1		B
12	151013-K1	GUIDE BUSH	4	▲	B
13	BLT-M30-100	BOLT	4	▲	B
	BLT-M30-110	BOLT	4		B
15	151032-K	COVER PLATE	1		B
16	BLT-M24-35	BOLT	10		B
17	WASHER-M24	WASHER	10		B
18	151005-K1	GAS VALVE COVER PLATE	1	▲	B
	151005-K	GAS VALVE COVER PLATE	1		B
19	1510019-K	SLEEVE WASHER	4		B
20	151002-K1	CONTROL VALVE COVER PLATE	1	△	B
	151002-K	CONTROL VALVE COVER PLATE	1		B
21	BLT-M20-35	BOLT	8		B
22	WASHER-M20	WASHER	4		B
23	151017	ISOLATOR T	1		B
24	151018	NYLON POLE	1		B
25	151025-K1	GUIDE PLATE SHIM	2	▲	
	151025-K	GUIDE PLATE SHIM 0.5	1		
27	151016	ISOLATOR T SHIM 1.0	1		
28	151016-2	ISOLATOR T SHIM 2.0	1		
29	151029	SIDE PLUG	2		B
30	151031-K	UPPER SPACER REAR	1		B
31	136096128	PLUG	1		B
34	PER MACHINE MODEL	TOP MOUNT BOX BRACKET B	1		
35	BLT-M30-120	BOLT	12		B
36	WASHER-M30	WASHER	24		B
37	NUT-M30	NUT	24		B
39	PER MACHINE MODEL	BRACKET PIN KIT	1		T

Box Bracket CP consists of parts marked "B"

Top Cap consists of parts marked "T"

For Decal and/or Tool Box information, please contact your Dealer

INT(interchangeability)

○ Interchangeable old ↔ new

△ Interchangeable old → new

▲ Interchangeable old ← new

× Not interchangeable