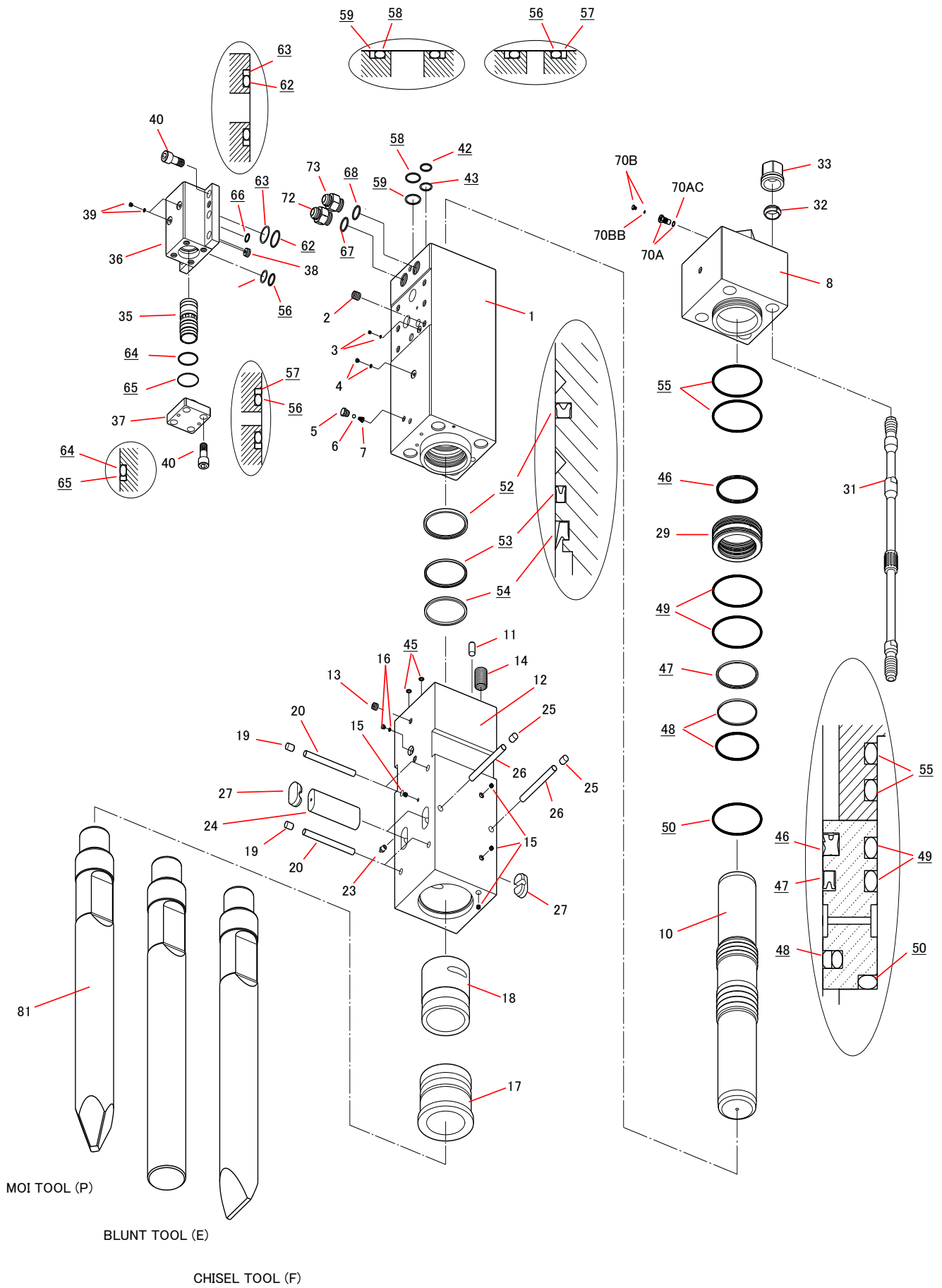


TNB-16K



Parts

2017.07.14

No.3

Sym	Part Code	Description	Q'ty	Ser.No.	Int	Remarks	Kit
	41518201J	CYLINDER CP	1	10096~	▲		
	41518201H	CYLINDER CP	1	10065, 10068~10095			
1	415182019	CYLINDER	1	10096~	▲		C
	415182018	CYLINDER	1	10065, 10068~10095			C
2	131024010	HELISERT	6	10065, 10068~			C
3	134912001	HEX SOCKET FLANGE PLUG	1	10065, 10068~			C
4	134912002	HEX SOCKET FLANGE PLUG	1	10065, 10068~			C
	41514366A	AIR CAP CP	1	10065, 10068~			C
5	415143660	AIR CAP	1	10065, 10068~			A,C
6	130505028	BALL	1	10065, 10068~			A,C
7	130806014	AIR CAP SPRING	1	10065, 10068~			A,C
8	415135030	CYLINDER COVER	1	10065, 10068~			
10	415135040	PISTON	1	10065, 10068~			
11	415634U30	LOCK PIN	1	10096~			
	41563305D	CHISEL HOLDER CP	1	10096~	▲		
	41563305C	CHISEL HOLDER CP	1	10065,10068~10095			
12	415633051	CHISEL HOLDER	1	10096~	▲		H
	415633050	CHISEL HOLDER	1	10065,10068~10095			H
13	134901104	PLUG	1	10065,10068~			H
14	131036015	HELISERT	4	10065,10068~			H
15	134901101	PLUG	4	10065,10068~			H
16	182136006	O-RING PLUG	1	10065,10068~			H
17	415633060	CHISEL BUSHING	1	10065,10068~			H
18	415133140	CHISEL HOLDER BUSHING	1	10065,10068~			H
19	136402011	PLUG	4	10065,10068~			H
20	415133250	STOPPER PIN	4	10065,10068~			H
23	135013002	GREASE NIPPLE	1	10065,10068~			H
24	415182100	RETAINER PIN	2	10065,10068~			
25	136402011	PLUG	2	10065,10068~			H
26	415182270	STOPPER PIN B	2	10065,10068~			H
27	136402039	RETAINER PIN PLUG	4	10065,10068~			
29	415135130	PACKING BUSHING	1	10065,10068~			
31	415135160	SIDE BOLT	4	10065,10068~			
32	136306001	SIDE BOLT RING	4	10065,10068~			
33	134206020	SIDE BOLT NUT	4	10065,10068~			
35	415147200	CONTROL VALVE	1	10065,10068~			
36	415694210	CONTROL VALVE BOX	1	10065,10068~			
37	415147221	CONTROL VALVE CAP	1	10065,10068~			
38	415135230	CHOKE PLUG	1	10065,10068~			
39	134912002	HEX SOCKET FLANGE PLUG	2	10065,10068~			
40	131724250	HEX SOCKET HEAD CAP SCREW	10	10070~	▲		
	131506010	HEX BOLT	10	10065,10068,10069			
41	131313124	WASHER	0	10070~			
	131313124	WASHER	10	10065,10068,10069			
42	131101034	O-RING	1	10065,10068~			S
43	131121034	BACK-UP RING	1	10065,10068~			S

Sym	Part Code	Description	Q'ty	Ser.No.	Int	Remarks	Kit
45	131101010	O-RING	2	10065,10068~			S
46	131220100	GAS SEAL	1	10065,10068~			S
47	131225100	OIL SEAL	1	10065,10068~			S
48	131230100	SLIDE RING S	1	10065,10068~			S
49	131101080	O-RING	2	10065,10068~			S
50	131108080	O-RING	1	10065,10068~			S
52	131227101	BUFFER RING	1	10065,10068~			S
53	131225101	OIL SEAL	1	10065,10068~			S
54	131219100	DUST SEAL	1	10065,10068~			S
55	131101080	O-RING	2	10065,10068~			S
56	131101034	O-RING	2	10065,10068~			S,V
57	131121034	BACK-UP RING	2	10065,10068~			S,V
58	131101045	O-RING	c	10065,10068~			S
59	131121045	BACK-UP RING	1	10065,10068~			S
62	131101049	O-RING	2	10065,10068~			S,V
63	131121049	BACK-UP RING	2	10065,10068~			S,V
64	131102010	O-RING	1	10065,10068~			S,V
65	131122010	BACK-UP RING	1	10065,10068~			S,V
66	131108023	O-RING	1	10065,10068~			S
67	131108028	O-RING	1	10065,10068~			S
68	131108028	O-RING	1	10065,10068~			S
	41514130K	GAS VALVE CP	1	10077~	▲		
	41514130J	GAS VALVE CP	1	10065,10068~10076			
70A	41514130L	GAS VALVE BODY CP	1	10077~	▲		G
	41514130G	GAS VALVE BODY CP	1	10065,10068~10076			G
70AC	131101015	O-RING	1	10065,10068~			G
70B	41514132E	GAS VALVE PLUG CP	1	10065,10068~			G
70BB	131101004	O-RING	1	10065,10068~			G
72	136096250	HOSE ADAPTER, IN (w/O-RING)	1	10065,10068~		1-5/16-12UNF	
73	136096251	HOSE ADAPTER, OUT (w/O-RING)	1	10065,10068~		1-5/16-12UNF	
81	415180412	MOIL TOOL (P) 115x1230L	1	10065,10068~		L=1230	
	415180422	BLUNT TOOL (E) 115x1230L	0	10065,10068~		L=1230	
	415180432	CHISEL TOOL (F) 115x1230L	0	10065,10068~		L=1230	
	41518280H	MASTER SEAL KIT	1	10065,10068~			
	41513580G	CONTROL VALVE SEAL KIT	1	10065,10068~			

Air Cap CP consists of part marked "A"
(#5, 6, & 7 NOT sold separately)

Seal Kit consists of the parts marked "S".
(Individual seals NOT sold separately)

Cylinder CP consists of the parts marked "C".

Contral Valve Seal Kit consists of parts marked "V"
(Individual seals NOT sold separately)

Chisel Holder CP consists of the parts marked "H".
(Quantity of the item #25,#26 required for this CP is 1.)

INT(interchangeability)
○ Interchangeable old ↔ new
△ Interchangeable old → new
▲ Interchangeable old ← new
× Not interchangeable

Gas Valve CP consists of the parts marked "G"
(#70A, 70AC & 70BB NOT sold separately)