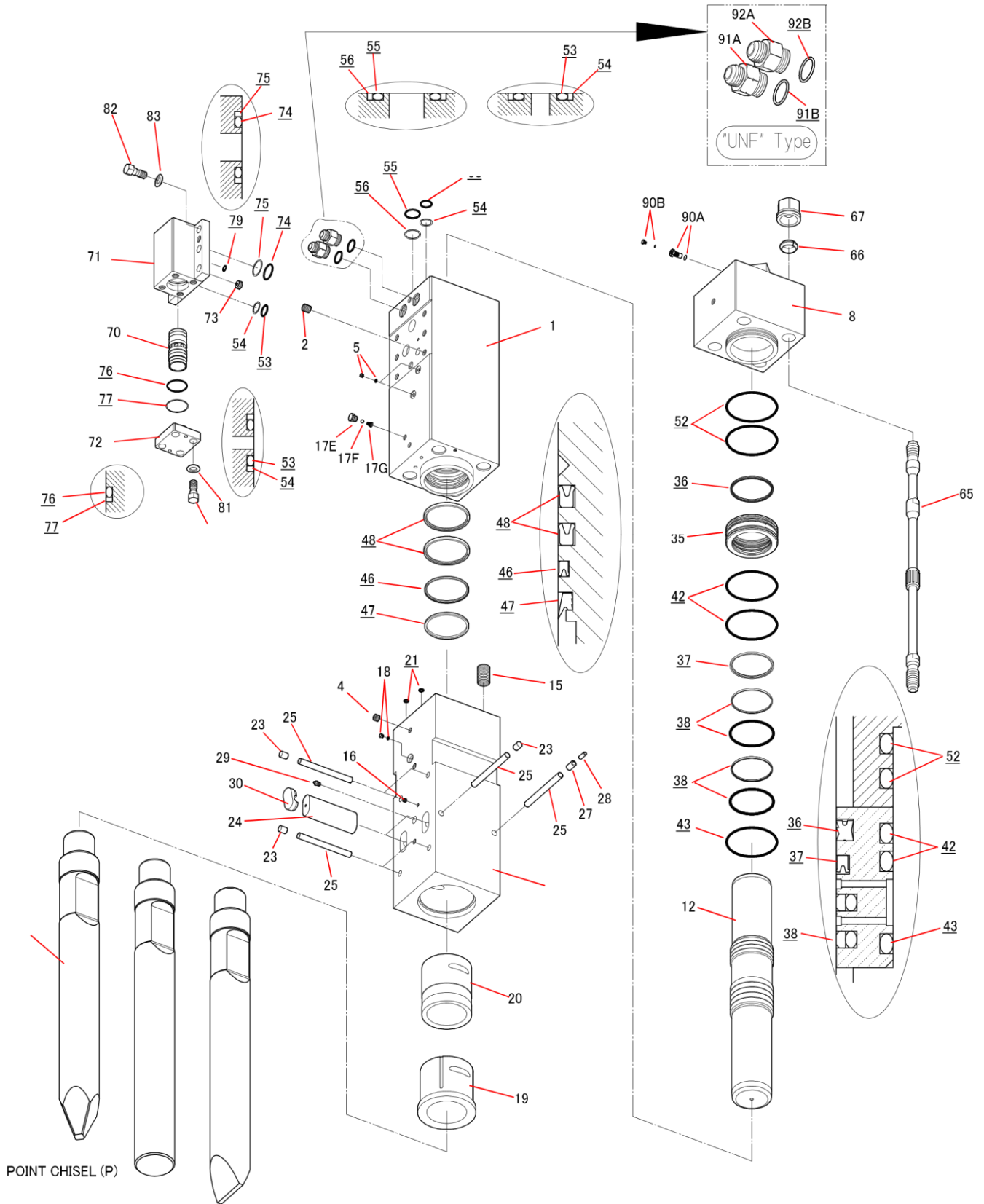


TNB-190LU



Parts

2015.10.15

No.1

Sym	Part Code	Description	Q'ty	Ser.No.	Int	Remarks	Kit
	41567701H	CYLINDER CP	1	1297~	x		
	41567701L	CYLINDER CP	1	1241~1296	x		
	41567701G	CYLINDER CP	1	1154~1240			
1	415677012	CYLINDER	1	1297~	x		C
	415677011	CYLINDER	1	1154~1296~			C
2	131030013	HELISERT	6	1154~			C
3	134903002	HEX PLUG	1	1154~1296			C
4	134901104	HEX PLUG	1	1297~			H
	134901104	HEX PLUG	2	1241~1296			C,H
	134901104	HEX PLUG	2	1154~1240			C
	41514366A	AIR CAP CP	1	11361-			C
5	134912002	HEX SOCKET FLANGE PLUG	2	1297~			C
	134912002	HEX SOCKET FLANGE PLUG	1	1154~1296			C
8	415189030	CYLINDER COVER	1	1154~			
12	415189040	PISTON	1	1154~			
	41518905A	CHISEL HOLDER CP	1	1241~			
	41562805C	CHISEL HOLDER CP	1	1154~1240			
14	415189052	CHISEL HOLDER	1	1154~			H
15	131048015	HELISERT	4	1154~			H
16	134901102	HEX PLUG	1	1154~			H
	41514366A	AIR CAP CP	1	1241~			C
	41514366A	AIR CAP CP	1	1154~1240			H
17E	415143660	AIR CAP	1	1241~			A,C
	415143660	AIR CAP	1	1154~1240			A,H
17F	130505028	BALL	1	1241~			A,C
	130505028	BALL	1	1154~1240			A,H
17G	130806014	AIR CAP SPRING	1	1241~			A,C
	130806014	AIR CAP SPRING	1	1154~1240			A,H
18	182136006	O-RING PLUG	1	1154~			H
19	415689060	CHISEL BUSHING	1	1154~			H
20	415189140	CHISEL HOLDER BUSHING	1	1154~			H
21	131101013	O-RING	2	1154~			S
23	136402011	PLUG	5	1154~			H
24	415189100	RETAINER PIN	2	1154~			
25	415189250	STOPPER PIN	6	1154~			H
27	130620030	SPRING PIN	1	1154~			H
28	130613030	SPRING PIN	1	1154~			H
29	135013002	GREASE NIPPLE	1	1154~			H
30	136402041	RETAINER PIN PLUG	2	1154~			
35	415189130	PACKING BUSHING	1	1154~			
36	131220190	GAS SEAL	1	1154~			S
37	131225190	OIL SEAL	1	1154~			S
38	131230190	SLIDE RING S	2	1154~			S
42	131102032	O-RING	2	1154~			S
43	131102132	O-RING	1	1154~			S
46	131225191	OIL SEAL	1	1154~			S
47	131219190	DUST SEAL	1	1154~			S

Sym	Part Code	Description	Q'ty	Ser.No.	Int	Remarks	Kit
48	131227191	BUFFER RING	2	1154~			S
52	131102032	O-RING	2	1154~			S
53	131101036	O-RING	3	1154~			S,V
54	131121036	BACK-UP RING	3	1154~			S,V
55	131101055	O-RING	1	1154~			S
56	131121055	BACK-UP RING	1	1154~			S
65	415189160	SIDE BOLT	4	1154~			
66	136306019	SIDE BOLT RING	4	1154~			
67	134206019	SIDE BOLT NUT	4	1154~			
70	415156200	CONTROL VALVE	1	1154~			
71	415156211	CONTROL VALVE BOX	1	1297~	x		
	415156210	CONTROL VALVE BOX	1	1154~1296			
72	415156220	CONTROL VALVE CAP	1	1154~			
73	415156230	CHOKE PLUG	1	1154~			
74	131101057	O-RING	2	1154~			S,V
75	131121057	BACK-UP RING	2	1154~			S,V
76	131102013	O-RING	1	1154~			S,V
77	131122013	BACK-UP RING	1	1154~			S,V
79	131108023	O-RING	1	1154~			S
80	131506022	HEX BOLT	4	1154~			
81	131313130	WASHER	4	1154~			
82	131506023	HEX BOLT	6	1154~			
83	131313130	WASHER	6	1154~			
	41514130J	GAS VALVE CP	1	1154-			
90A	41514130G	GAS VALVE BODY CP	1	1154~			G
90B	41514132E	GAS VALVE PLUG CP	1	1154~			G
91A	182092220	HOSE ADAPTER-IN (WITH O-RING)	1	1154~		1-5/16-12UNF	
91B	131108038	O-RING	1	1154-			S
92A	182092221	HOSE ADAPTER-OUT (WITH O-RING)	1	1154-		1-5/16-12UNF	
92B	131108038	O-RING	1	1154-			S
	415189411	MOIL TOOL (P) 140x1500L	1	11361-		L=1500	
	415189421	BLUNT TOOL (E) 140x1500L	0	11361-		L=1500	
	415189431	CHISEL TOOL (F) 140x1500L	0	11361-		L=1500	
	41567780L	SEAL KIT	1	11361-			
	41515680G	CONTROL VALVE SEAL KIT	1	11361-			

Air Cap CP consists of part marked "A"
(#17E, 17F, & 17G NOT sold separately)

Seal Kit consists of the parts marked "S".
(Individual seals NOT sold separately)

Cylinder CP consists of the parts marked "C".

O-RING is included to #91A & #92A

Chisel Holder CP consists of the parts marked "H".

INT(interchangeability)

Gas Valve CP consists of the parts marked "G"
(#90A NOT sold separately)

○ Interchangeable old ↔ new

△ Interchangeable old → new

▲ Interchangeable old ← new

Control Valve Seal Kit consists of parts marked "V"
(Individual seals NOT sold separately)

× Not interchangeable