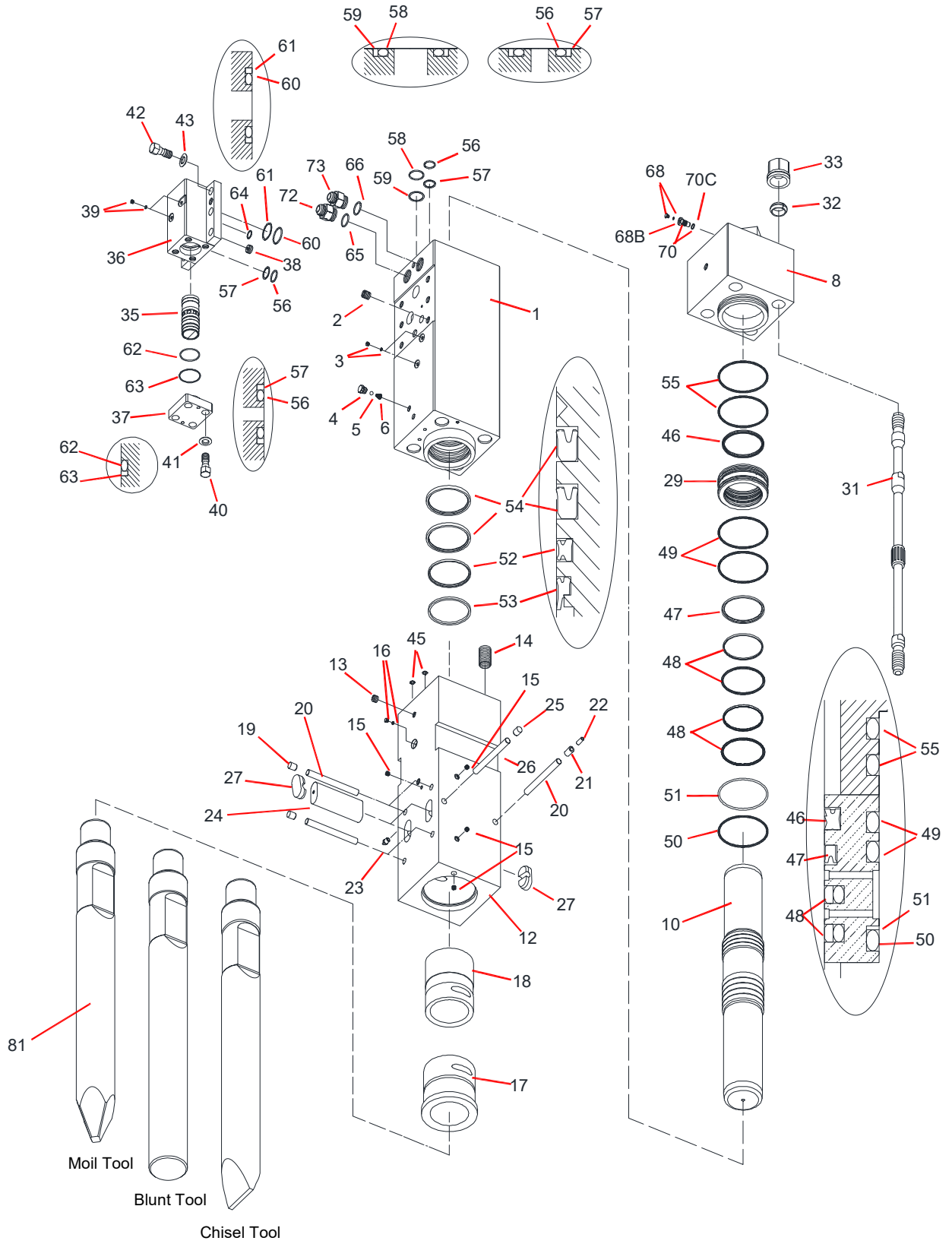


TNB-230LU1



2014.11.20

No.5

Sym	Part Code	Description	Q'ty	Ser.No.	Int	Remarks	Kit
	41560701C	CYLINDER CP	1	11890-			
1	415607010	CYLINDER	1	11890-			C
2	131030013	HELISERT	6	11890-			C
3	134912002	HEX SOCKET FLANGE PLUG	2	11890-			C
		AIR CAP CP	1	11890-			C
4	415143660	AIR CAP	1	11890-			A,C
5	130505028	BALL	1	11890-			A,C
6	130806014	AIR CAP SPRING	1	11890-			A,C
8	415156030	CYLINDER COVER	1	11890-			
10	415191040	PISTON	1	11890-			
	41560705C	CHISEL HOLDER CP	1	11890-			
12	415607050	CHISEL HOLDER	1	11890-			H
13	134901104	PLUG	1	11890-			H
14	131052074	HELISERT	4	11890-			H
15	134901102	PLUG	4	11890-			H
16	182136006	O-RING PLUG	1	11890-			H
17	415607060	CHISEL BUSHING	1	11890-			H
18	415153140	CHISEL HOLDER BUSHING	1	11890-			H
19	136402011	PLUG	4	11890-			H
20	415192250	STOPPER PIN	5	11890-			H
21	130620030	SPRING PIN	1	11890-			H
22	130613030	SPRING PIN	1	11890-			H
23	135013002	GREASE NIPPLE	1	11890-			H
24	415192100	RETAINER PIN	2	11890-			
25	136402011	PLUG	1	11890-			
26	415192250	STOPPER PIN	1	11890-			
27	136402042	RETAINER PIN PLUG	4	11890-			
29	415607130	PACKING BUSHING	1	11890-			
31	415191160	SIDE BOLT	4	11890-			
32	136306022	SIDE BOLT RING	4	11890-			
33	134206022	SIDE BOLT NUT	4	11890-			
35	415156200	CONTROL VALVE	1	11890-			
36	415679210	CONTROL VALVE BOX	1	11890-			
37	415156220	CONTROL VALVE CAP	1	11890-			
38	415191230	CHOKE PLUG	1	11890-			
39	134912002	HEX SOCKET FLANGE PLUG	2	11890-			
40	131506022	HEX BOLT	4	11890-			
41	131313130	WASHER	4	11890-			
42	131506023	HEX BOLT	6	11890-			
43	131313130	WASHER	6	11890-			
	41560780F	SEAL KIT	1	11971-	▲		
	41560780E	SEAL KIT	1	11902-11970	▲		
	41560780D	SEAL KIT	1	11890-11901			
45	131101013	O-RING	2	11890-			S
46	131220220	GAS SEAL	1	11890-			S
47	131225220	OIL SEAL	1	11890-			S
48	131230220	SLIDE RING S	2	11890-			S
49	131102033	O-RING	2	11890-			S
50	131102133	O-RING	1	11890-			S
51	131122033	BACK-UP RING	1	11890-			S
52	131233238	X-SEAL	1	11971-	▲		S
	131233237	X-SEAL	1	11890-11970			S
53	131219238	DUST SEAL	1	11971-	▲		S
	131219220	DUST SEAL	1	11902-11970	▲		S
	131219237	DUST SEAL	1	11890-11901			S

Sym	Part Code	Description	Q'ty	Ser.No.	Int	Remarks	Kit
54	131225238	OIL SEAL	2	11971-	▲		S
	131225237	OIL SEAL	2	11890-11970			S
55	131102033	O-RING	2	11890-			S
56	131101036	O-RING	3	11890-			V,S
57	131121036	BACK-UP RING	3	11890-			V,S
58	131101055	O-RING	1	11890-			S
59	131121055	BACK-UP RING	1	11890-			S
60	131101057	O-RING	2	11890-			V,S
61	131121057	BACK-UP RING	2	11890-			V,S
62	131102013	O-RING	1	11890-			V,S
63	131122013	BACK-UP RING	1	11890-			V,S
64	131108023	O-RING	1	11890-			S
65	131108038	O-RING	1	11890-			S
66	131108038	O-RING	1	11890-			S
	41514130J	GAS VALVE CP	1	11890-	▲		
	41514130E	GAS VALVE CP	1	11890-			
68	41514132E	GAS VALVE PLUG CP	1	11890-	▲		
	41514132A	GAS VALVE PLUG CP	1	11938-			
68B	131101004	O-RING	1	11890-11937			G
70	41514130G	GAS VALVE BODY CP	1	11938-			G
70C	131101015	O-RING	1	11890-11937			G
72	182092220	HOSE ADAPTER IN (1-5/16-12UNF)	1	11890-		1-5/16-12UNF	
73	182092221	HOSE ADAPTER OUT (1-5/16-12UNF)	1	11890-		1-5/16-12UNF	
81	415192413	MOIL TOOL 146x1350L	1	11890-		L=1350	
	415192423	BLUNT TOOL 146x1350L	0	11890-		L=1350	
	415192433	CHISEL TOOL 146x1350L	0	11890-		L=1350	

Air Cap CP consists of part marked "A"
(#4, 5, & 6 NOT sold separately)

Cylinder CP consists of the parts marked "C".

Chisel Holder CP consists of the parts marked "H".

Gas Valve CP consists of the parts marked "G"
(#68B, 70 & 70C NOT sold separately)

O-RING is included to #72 & #73

Seal Kit consists of the parts marked "S".
(Individual seals NOT sold separately)

Contral Valve Seal Kit consists of parts marked "V"
(Individual seals NOT sold separately)

INT(interchangeability)

- Interchangeable old ↔ new
- △ Interchangeable old → new
- ▲ Interchangeable old ← new
- × Not interchangeable