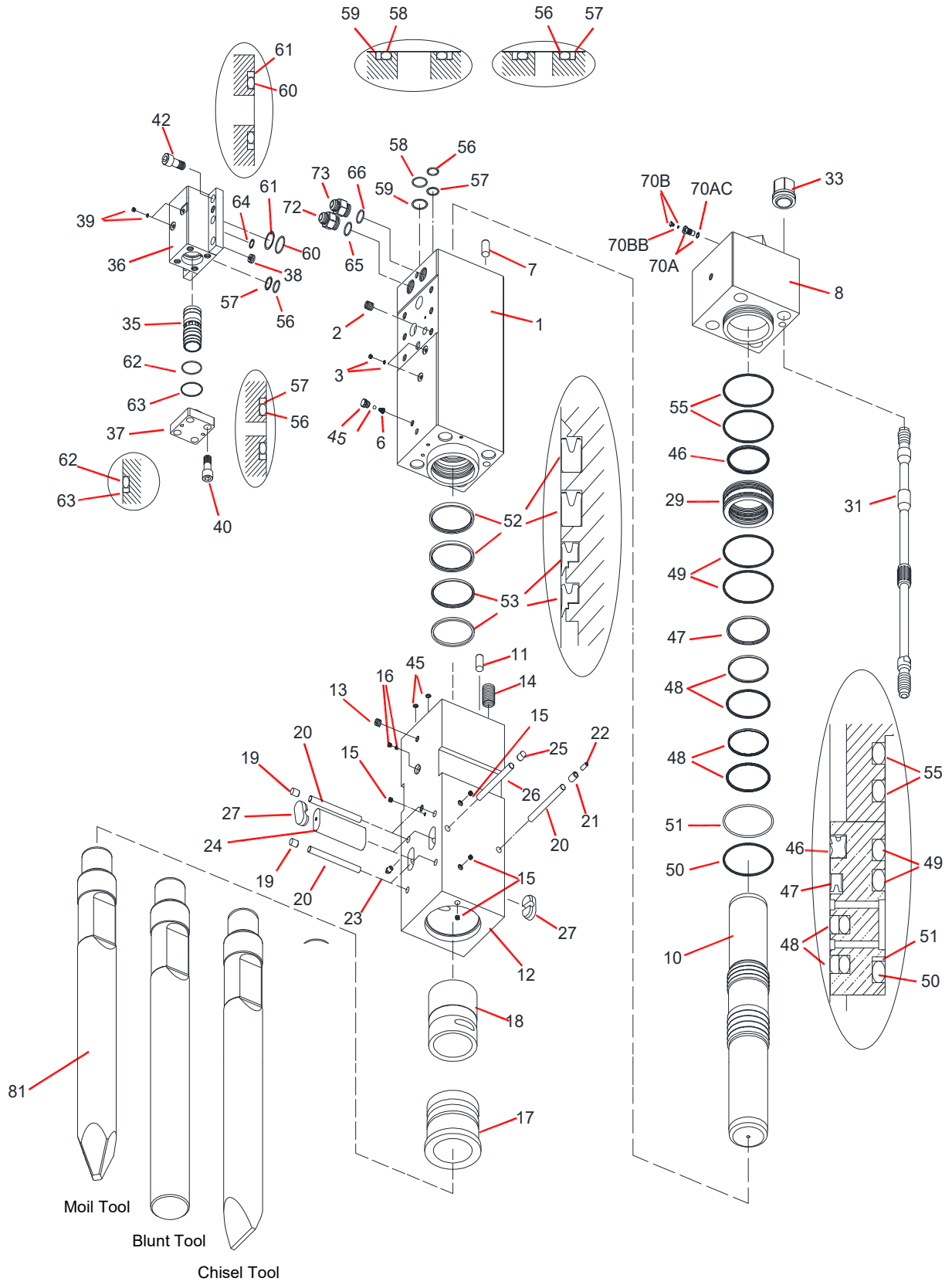


TNB-230LU2



Parts

2019.06.18

No.7

| Sym | Part Code | Description | Q'ty | Ser.No. | Int | Remarks | Kit |
|-----|-----------|------------------------|------|--|-----|---------|-----|
| | 41561501F | CYLINDER CP | 1 | 15522- | × | | |
| | 41561501E | CYLINDER CP | 1 | 15342-15521 | ▲ | | |
| | 41561501D | CYLINDER CP | 1 | 15333-15341 | ▲ | | |
| | 41561501C | CYLINDER CP | 1 | 15001-15332 | | | |
| 1 | 415615013 | CYLINDER | 1 | 115522- | × | | C |
| | 415615012 | CYLINDER | 1 | 15342-115521 | ▲ | | C |
| | 415615011 | CYLINDER | 1 | 15333-15341 | ▲ | | C |
| | 415615010 | CYLINDER | 1 | 15001-15332 | | | C |
| 2 | 131030013 | HELISERT | 6 | 15001- | | | C |
| 3 | 134912002 | HEX SOCKET FLANGE PLUG | 2 | 15001- | | | C |
| | 41514366A | AIR CAP CP | 1 | 15001- | | | C |
| 4 | 415143660 | AIR CAP | 1 | 15001- | | | A,C |
| 5 | 130505028 | BALL | 1 | 15001- | | | A,C |
| 6 | 130806014 | AIR CAP SPRING | 1 | 15001- | | | A,C |
| 7 | 415615U30 | LOCK PIN | 1 | 115522- | × | | |
| | 415618U30 | LOCK PIN | 1 | 15342-115521 | | | |
| 8 | 415156032 | CYLINDER COVER | 1 | 115522 | × | | |
| | 415156031 | CYLINDER COVER | 1 | 15342-115521 | ▲ | | |
| | 415156030 | CYLINDER COVER | 1 | 15001-15341 | | | |
| 10 | 415191041 | PISTON | 1 | 15005,15006,15010- (Excl 15014,15019) | ▲ | | |
| | 415191040 | PISTON | 1 | 15001-15009,15014,15019 (Excl 15005,15006) | | | |
| 11 | 415615U30 | LOCK PIN | 1 | 115522- | × | | |
| | 415618U30 | LOCK PIN | 1 | 15333-115521 | | | |
| | 41560705F | CHISEL HOLDER CP | 1 | 115522- | × | | |
| | 41560705E | CHISEL HOLDER CP | 1 | 15333-115521 | ▲ | | |
| | 41560705D | CHISEL HOLDER CP | 1 | 15166-15332 | ○ | | |
| | 41560705C | CHISEL HOLDER CP | 1 | 15001-15165 | | | |
| 12 | 415607052 | CHISEL HOLDER | 1 | 115522 | × | | H |
| | 415607051 | CHISEL HOLDER | 1 | 15333-115521 | ▲ | | H |
| | 415607050 | CHISEL HOLDER | 1 | 15001-15332 | | | H |
| 13 | 134901104 | PLUG | 1 | 15001- | | | H |
| 14 | 131052074 | HELISERT | 4 | 15001- | | | H |
| 15 | 134901102 | PLUG | 4 | 15001- | | | H |
| 16 | 182136006 | O-RING PLUG | 1 | 15001- | | | H |
| 17 | 415607061 | CHISEL BUSHING | 1 | 15166- | ○ | | H |
| | 415607060 | CHISEL BUSHING | 1 | 15001-15165 | | | H |
| 18 | 415153140 | CHISEL HOLDER BUSHING | 1 | 15001- | | | H |
| 19 | 136402015 | PLUG | 4 | 115522- | ▲ | | H |
| | 136402011 | PLUG | 4 | 15001-115521 | | | H |
| 20 | 415192251 | STOPPER PIN | 5 | 115522- | | | H |
| | 415192250 | STOPPER PIN | 5 | 15001-115521 | | | H |
| 21 | 130620030 | SPRING PIN | 1 | 15001- | | | H |
| 22 | 130613030 | SPRING PIN | 1 | 15001- | | | H |
| 23 | 135013002 | GREASE NIPPLE | 1 | 15001- | | | |
| 24 | 415192100 | RETAINER PIN | 2 | 15001- | | | |
| 25 | 136402011 | PLUG | 1 | 15001- | | | |
| 26 | 415192250 | STOPPER PIN | 1 | 15001- | | | |
| 27 | 136402042 | RETAINER PIN PLUG | 4 | 15001- | | | |
| 29 | 415607130 | PACKING BUSHING | 1 | 15001- | | | |
| 31 | 415191161 | SIDE BOLT | 4 | 15333- | ▲ | | |
| | 415191160 | SIDE BOLT | 4 | 15001-15332 | | | |
| 32 | 136306022 | SIDE BOLT RING | 0 | 15333- | | | |
| | 136306022 | SIDE BOLT RING | 4 | 15001-15332 | | | |
| 33 | 134206023 | SIDE BOLT NUT | 4 | 15333- | ▲ | | |
| | 134206022 | SIDE BOLT NUT | 4 | 15001-15332 | | | |

| Sym | Part Code | Description | Q'ty | Ser.No. | Int | Remarks | Kit |
|-----|-----------|---------------------------|------|--|-----|---------|-----|
| 35 | 415156200 | CONTROL VALVE | 1 | 15001- | | | |
| 36 | 415679210 | CONTROL VALVE BOX | 1 | 15001- | | | |
| 37 | 415156221 | CONTROL VALVE CAP | 1 | 15136- | ▲ | | |
| | 415156220 | CONTROL VALVE CAP | 1 | 15001-15135 | | | |
| 38 | 415191230 | CHOKE PLUG | 1 | 15001- | | | |
| 39 | 134912002 | HEX SOCKET FLANGE PLUG | 2 | 15001- | | | |
| 40 | 131730260 | HEX SOCKET HEAD CAP SCREW | 4 | 15476,15478,15479,15481,15482,15484- | ▲ | | |
| | 131506022 | HEX BOLT | 4 | 15001-15483 (Excl 15476,15478,15479,15481,15482) | | | |
| 41 | 131313130 | WASHER | 0 | 15476,15478,15479,15481,15482,15484- | | | |
| | 131313130 | WASHER | 4 | 15001-15483 (Excl 15476,15478,15479,15481,15482) | | | |
| 42 | 131730290 | HEX SOCKET HEAD CAP SCREW | 6 | 15476,15478,15479,15481,15482,15484- | ▲ | | |
| | 131506023 | HEX BOLT | 6 | 15001-15483 (Excl 15476,15478,15479,15481,15482) | | | |
| 43 | 131313130 | WASHER | 0 | 15476,15478,15479,15481,15482,15484- | | | |
| | 131313130 | WASHER | 6 | 15001-15483 (Excl 15476,15478,15479,15481,15482) | | | |
| | 41561580D | SEAL KIT | 1 | 15001- | | | |
| 45 | 131101013 | O-RING | 2 | 15001- | | | S |
| 46 | 131220220 | GAS SEAL | 1 | 15001- | | | S |
| 47 | 131225220 | OIL SEAL | 1 | 15001- | | | S |
| 48 | 131230220 | SLIDE RING S | 2 | 15001- | | | S |
| 49 | 131102033 | O-RING | 2 | 15001- | | | S |
| 50 | 131102133 | O-RING | 1 | 15001- | | | S |
| 51 | 131122033 | BACK-UP RING | 1 | 15001- | | | S |
| 52 | 131225239 | OIL SEAL | 2 | 15001- | | | S |
| 53 | 131219239 | DUST SEAL | 2 | 15001- | | | S |
| 55 | 131102033 | O-RING | 2 | 15001- | | | S |
| 56 | 131101036 | O-RING | 2 | 15001- | | | V,S |
| 57 | 131121036 | BACK-UP RING | 2 | 15001- | | | V,S |
| 58 | 131101055 | O-RING | 1 | 15001- | | | S |
| 59 | 131121055 | BACK-UP RING | 1 | 15001- | | | S |
| 60 | 131101057 | O-RING | 2 | 15001- | | | V,S |
| 61 | 131121057 | BACK-UP RING | 2 | 15001- | | | V,S |
| 62 | 131102013 | O-RING | 1 | 15001- | | | V,S |
| 63 | 131122013 | BACK-UP RING | 1 | 15001- | | | V,S |
| 64 | 131108023 | O-RING | 1 | 15001- | | | S |
| 65 | 131108038 | O-RING | 1 | 15001- | | | S |
| 66 | 131108038 | O-RING | 1 | 15001- | | | S |
| 67 | 131101036 | O-RING | 1 | 15001~ | | | S |
| 68 | 131121036 | BACK-UP RING | 1 | 15001~ | | | S |
| | 41514130K | GAS VALVE CP | 1 | 15201- | ▲ | | |
| | 41514130J | GAS VALVE CP | 1 | 15001-15200 | | | |

| Sym | Part Code | Description | Q'ty | Ser.No. | Int | Remarks | Kit |
|------|-----------|--------------------------------|------|-------------|-----|--------------|-----|
| 70A | 41514130L | GAS VALVE BODY CP | 1 | 15201- | ▲ | | G |
| | 41514130G | GAS VALVE BODY CP | 1 | 15001-15200 | | | G |
| 70AC | 131101015 | O-RING | 1 | 15001- | | | G |
| 70B | 41514132E | GAS VALVE PLUG CP | 1 | 15001- | | | G |
| 70BB | 131101004 | O-RING | 1 | 15001- | | | G |
| 72 | 136096255 | HOSE ADAPTER - IN (W/ O-RING) | 1 | 15117- | ▲ | 1-5/16-12UNF | |
| 73 | 136096256 | HOSE ADAPTER - OUT (W/ O-RING) | 1 | 15117- | ▲ | 1-5/16-12UNF | |
| | | | | | | | |
| 81 | 415192414 | MOIL TOOL 146x1350L | 1 | 15209- | ▲ | L=1350 | |
| | 415192424 | BLUNT TOOL 146x1350L | 0 | 15209- | ▲ | L=1350 | |
| | 415192434 | CHISEL TOOL 146x1350L | 0 | 15209- | ▲ | L=1350 | |
| | | | | | | | |
| | 41561580D | SEAL KIT | 1 | 15001~ | | | |
| | 41515680G | CONTROL VALVE SEAL KIT | | 15001~ | | | |

Air Cap CP consists of part marked "A"
(#4, 5, & 6 NOT sold separately)

Cylinder CP consists of the parts marked "C".

Chisel Holder CP consists of the parts marked "H".

Gas Valve CP consists of the parts marked "G"
(#70A, 70AC & 70BB NOT sold separately)

O-RING is included to #72 & #73

Seal Kit consists of the parts marked "S".
(Individual seals NOT sold separately)

Control Valve Seal Kit consists of parts marked "V"
(Individual seals NOT sold separately)

INT(interchangeability)

○ Interchangeable old ↔ new

△ Interchangeable old → new

▲ Interchangeable old ← new

× Not interchangeable