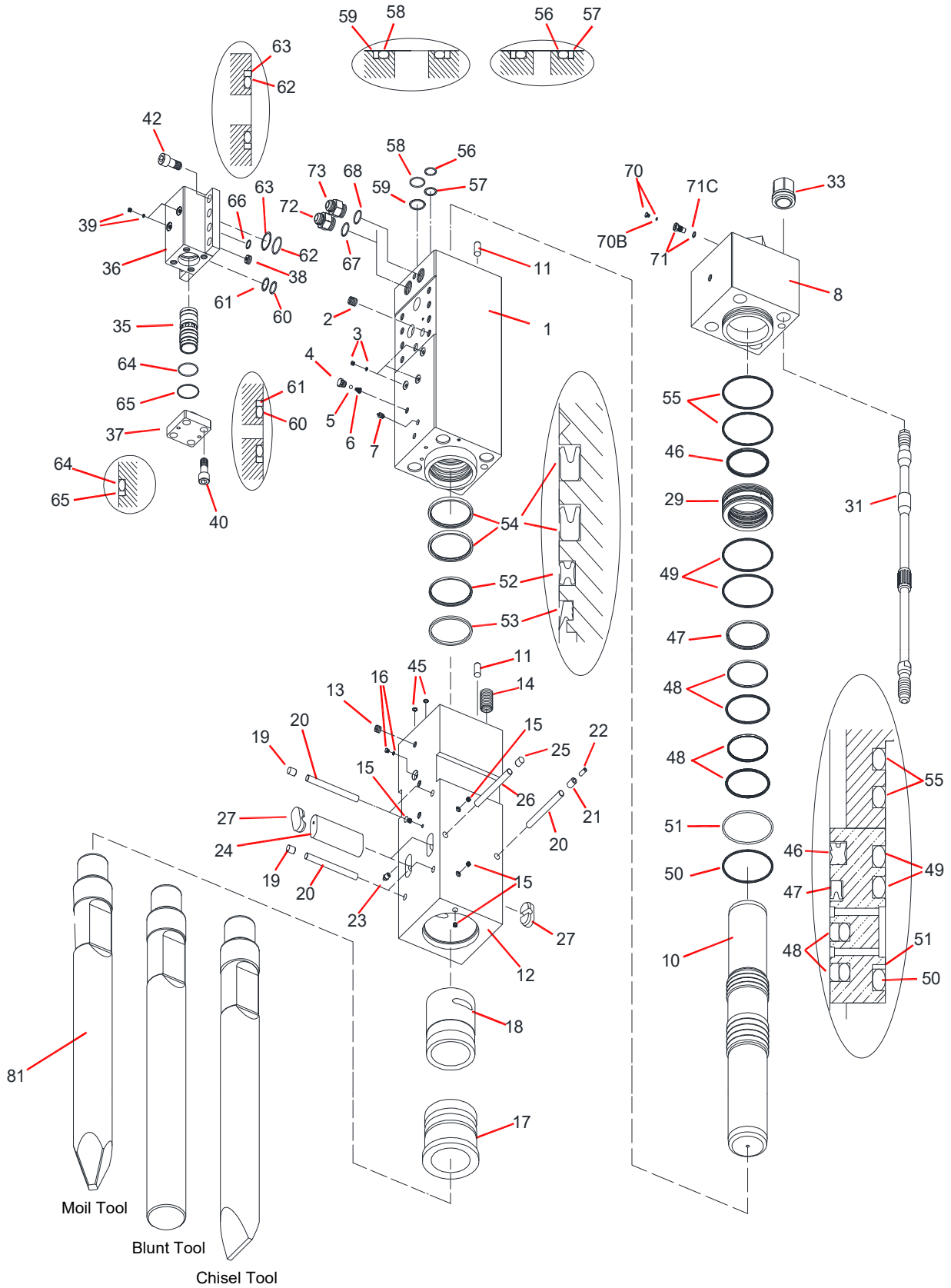


TNB-310LU1



Parts

2019.06.18

No.06

Sym	Part Code	Description	Q'ty	Ser.No.	Int	Remarks	Kit
	41560801F	CYLINDER CP	1	11714-	×		
	41560801E	CYLINDER CP	1	11649-11713	▲		
	41560801D	CYLINDER CP	1	11647-11648	▲		
	41560801C	CYLINDER CP	1	11483-11646			
1	415608013	CYLINDER	1	11714-	×		C
	415608012	CYLINDER	1	11649-11713	▲		C
	415608011	CYLINDER	1	11647-11648	▲		C
	415608010	CYLINDER	1	11483-11646			C
2	131033012	HELISERT	8	11483-			C
3	134912002	HEX SOCKET FLANGE PLUG	3	11483-			C
		AIR CAP CP	1				C
4	415143660	AIR CAP	1	11483-			A,C
5	130505028	BALL	1	11483-			A,C
6	130806014	AIR CAP SPRING	1	11483-			A,C
7	135013002	GREASE NIPPLE	1	11483-			C
8	415194033	CYLINDER COVER	1	11714-	×		
	415194032	CYLINDER COVER	1	11649-11713	▲		
	415194031	CYLINDER COVER	1	11483-11648			
10	415194041	PISTON	1	11483-11584	▲		
	415194040	PISTON	1	11714-			
11	415615U30	LOCK PIN	2	11649-11713	×		
	415618U30	LOCK PIN	2	11647-11648			
	415618U30	LOCK PIN	1	11714-			
	41560805F	CHISEL HOLDER CP	1	11647-11713	×		
	41560805E	CHISEL HOLDER CP	1	11586-11646	▲		
	41560805D	CHISEL HOLDER CP	1	11483-11585	○		
	41560805C	CHISEL HOLDER CP	1	11714-			
12	415608052	CHISEL HOLDER	1	11647-11713	×		H
	415608051	CHISEL HOLDER	1	11483-11646	▲		H
	415608050	CHISEL HOLDER	1	11483-			H
13	134901104	PLUG	1	11483-			H
14	131052074	HELISERT	4	11483-			H
15	134901102	PLUG	4	11483-			H
16	182136006	O-RING PLUG	1	11483-			H
17	415608061	CHISEL BUSHING	1	11586-	○		H
	415608060	CHISEL BUSHING	1	11483-11585			H
18	415159140	CHISEL HOLDER BUSHING	1	11483-			H
19	136402015	PLUG	4	11714-	▲		H
	136402011	PLUG	4	11483-11713			H
20	415159251	STOPPER PIN	5	11714-	▲		H
	415159250	STOPPER PIN	5	11483-11713			H

Sym	Part Code	Description	Q'ty	Ser.No.	Int	Remarks	Kit
21	130620030	SPRING PIN	1	11483-			H
22	130613030	SPRING PIN	1	11483-			H
23	135013002	GREASE NIPPLE	1	11483-			
24	415195100	RETAINER PIN	2	11714-			
25	136402015	PLUG	1	11483-	▲		
	136402011	PLUG	1	11483-11713			
26	415159251	STOPPER PIN	1	11714-	▲		
	415159250	STOPPER PIN	1	11483-11713			
27	136402043	RETAINER PIN PLUG	4	11483-			
29	415608130	PACKING BUSHING	1	11483-			
31	415194162	SIDE BOLT	4	11679-	▲		
	415194161	SIDE BOLT	4	11483-11678			
32	136306022	SIDE BOLT RING	0	11679-			
	136306022	SIDE BOLT RING	4	11483-11678			
33	134206023	SIDE BOLT NUT	4	11679-	▲		
	134206022	SIDE BOLT NUT	4	11483-11678			
35	415161200	CONTROL VALVE	1	11483-			
36	415680210	CONTROL VALVE BOX	1	11483-			
37	415161221	CONTROL VALVE CAP	1	11584-	▲		
	415161220	CONTROL VALVE CAP	1	11483-11583			
38	415159230	CHOKE PLUG	1	11483-			
39	134912002	HEX SOCKET FLANGE PLUG	2	11483-			
40	131733280	HEX SOCKET HEAD CAP SCREW	4	11699-	▲		
	131506038	HEX BOLT	4	11483-11698			
41	131313133	WASHER	0	11699-			
	131313133	WASHER	4	11483-11698			
42	131733300	HEX SOCKET HEAD CAP SCREW	8	11699-	▲		
	131506039	HEX BOLT	8	11483-11698			
43	131313133	WASHER	0	11699-			
	131313133	WASHER	8	11483-11698			
	41560880E	SEAL KIT	1	11483-			
45	131101013	O-RING	2	11483-			S
46	131220300	GAS SEAL	1	11483-			S
47	131225300	OIL SEAL	1	11483-			S
48	131230300	SLIDE RING S	2	11483-			S
49	131102036	O-RING	2	11483-			S
50	131102136	O-RING	1	11483-			S
51	131122036	BACK-UP RING	1	11483-			S
52	131233310	X-SEAL	1	11483-			S
53	131219300	DUST SEAL	1	11483-			S

Sym	Part Code	Description	Q'ty	Ser.No.	Int	Remarks	Kit
54	131225310	OIL SEAL	2	11483-			S
55	131102036	O-RING	2	11483-			S
56	131101042	O-RING	1	11483-			S
57	131121042	BACK-UP RING	1	11483-			S
58	131101057	O-RING	1	11483-			S
59	131121057	BACK-UP RING	1	11483-			S
60	131101045	O-RING	2	11483-			V,S
61	131121045	BACK-UP RING	2	11483-			V,S
62	131101063	O-RING	2	11483-			V,S
63	131121063	BACK-UP RING	1	11483-			V,S
64	131102018	O-RING	1	11483-			V,S
65	131122018	BACK-UP RING	1	11483-			V,S
66	131108023	O-RING	1	11483-			S
67	131108043	O-RING	1	11483-			S
68	131108043	O-RING	1	11483-			S
	41514130K	GAS VALVE CP	1	11595-	▲		
	41514130J	GAS VALVE CP	1	11508-11594	▲		
	41514130E	GAS VALVE CP	1	11483-11507			
70	41514132E	GAS VALVE PLUG CP	1	11508-	▲		G
	41514132A	GAS VALVE PLUG CP	1	11483-11507			G
70B	131101004	O-RING	1	11483-			G
71	41514130L	GAS VALVE BODY CP	1	11595-	▲		G
	41514130G	GAS VALVE BODY CP	1	11483-11594			G
71C	131101015	O-RING	1	11483-			G
72	182092300	HOSE ADAPTER IN (1-5/8-12UNF)	1	11483-		1-5/8-12UNF	
73	182092301	HOSE ADAPTER OUT (1-5/8-12UNF)	1	11483-		1-5/8-12UNF	
81	415195412	MOIL TOOL 160x1500L	1	11623-	▲	L=1500	
	415195411	MOIL TOOL 160x1500L	1	11483-11622		L=1500	
	415195422	BLUNT TOOL 160x1500L	0	11623-	▲	L=1500	
	415195421	BLUNT TOOL 160x1500L	0	11483-11622		L=1500	
	415195432	CHISEL TOOL 160x1500L	0	11623-	▲	L=1500	
	415195431	CHISEL TOOL 160x1500L	0	11483-11622		L=1500	

Air Cap CP consists of part marked "A"
(#4, 5, & 6 NOT sold separately)

Seal Kit consists of the parts marked "S".
(Individual seals NOT sold separately)

Cylinder CP consists of the parts marked "C".

Contral Valve Seal Kit consists of parts marked "V"
(Individual seals NOT sold separately)

Chisel Holder CP consists of the parts marked "H".

Gas Valve CP consists of the parts marked "G"
(#70, 70B, 71 & 71C NOT sold separately)

INT(interchangeability)
○ Interchangeable old ↔ new
△ Interchangeable old → new
▲ Interchangeable old ← new
× Not interchangeable

O-RING is included to #72 & #73