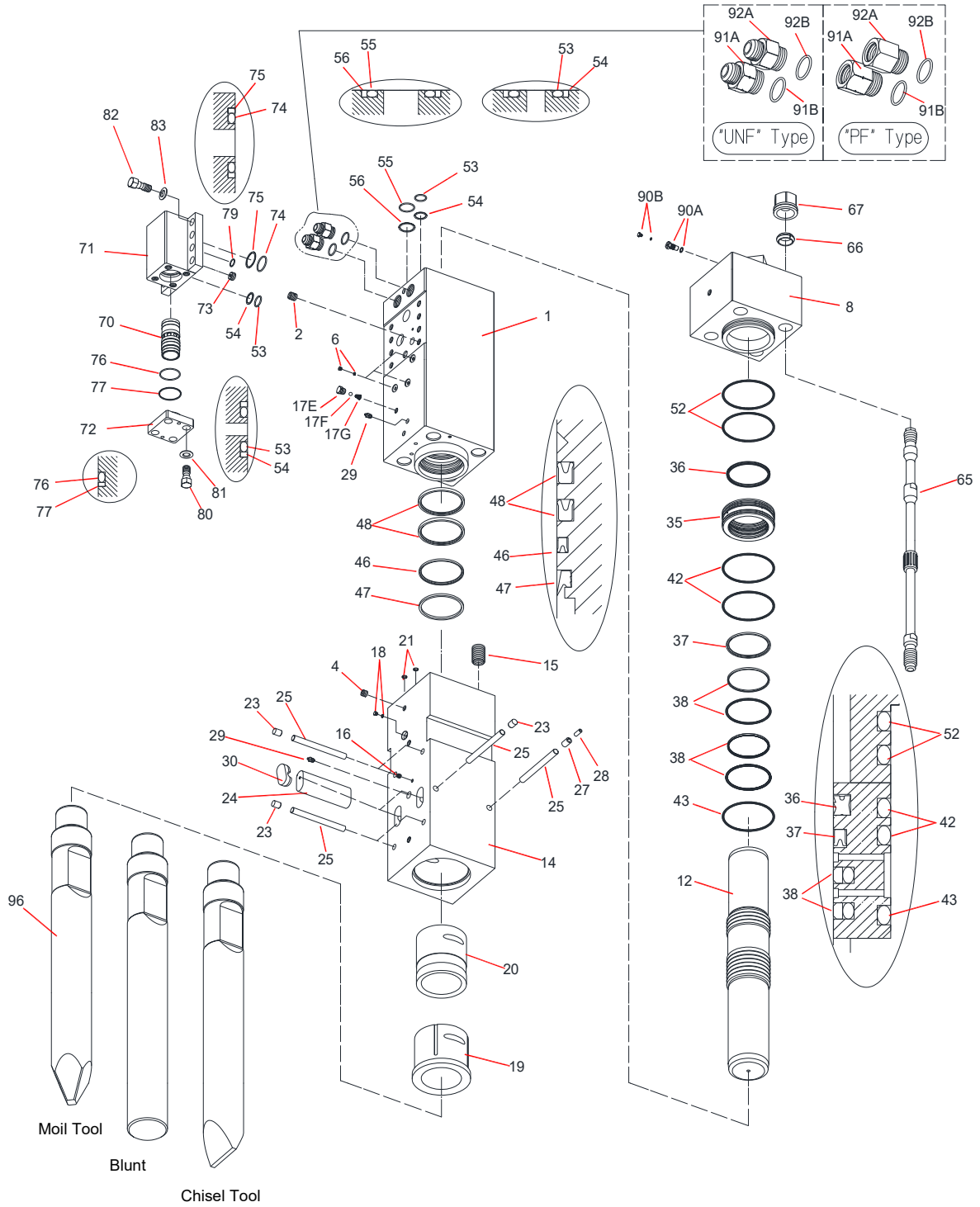


TNB-400LU



Parts

2015.04.03

No.09

Sym	Part Code	Description	Q'ty	Ser.No.	Int	Remarks	Kit
	41568101R	Cylinder CP	1CP	1071-	x		
	41568101Q	Cylinder CP	1CP	1068-1070	O		
	41568101L	Cylinder CP	1CP	1067	x		
	41568101C	Cylinder CP	1CP	1048-1066			
1	415681012	Cylinder	1	1071-	x		C
	415681011	Cylinder	1	1068-1070	x		C
	415681010	Cylinder	1	1048-1067			C
2	131033012	Helisert	8	1048-			C
3	134903002	Hex Plug	1	1048-1070			C
4	134901104	Hex Plug	1	1071-			H
	134901104	Hex Plug	2	1067-1070			C,H
	134901104	Hex Plug	2	1048-1066			C
6	134912002	Hex Socket Flange Plug	3	1071-			C
	134912002	Hex Socket Flange Plug	2	1068-1070			C
	134912002	Hex Socket Flange Plug	1	1048-1067			C
8	415197030	Cylinder Cover	1	1048-			
12	415197040	Piston	1	1048-			
	41519805A	Chisel Holder CP	1CP	1067-	x		
	41519805H	Chisel Holder CP	1CP	1048-1066			
14	415198052	Chisel Holder	1	1048-			H
15	131064015	Helisert	4	1048-			H
16	134901102	Hex Plug	1	1048-			H
		Air Cap CP	1	1067-			C
		Air Cap CP	1	1048-1066			H
17E	415143660	Air Cap	1	1067-			A,C
	415143660	Air Cap	1	1048-1066			A,H
17F	130505028	Ball	1	1067-			A,C
	130505028	Ball	1	1048-1066			A,H
17G	130806014	Air Cap Spring	1	1067-			A,C
	130806014	Air Cap Spring	1	1048-			A,H
18	182136006	O-Ring Plug	1	1048-			H
19	415161060	Chisel Bushing	1	1048-			H
20	415161140	Chisel Holder Bushing	1	1048-			H
21	131101013	O-Ring	2	1048-			S
23	136402011	Plug	5	1048-			H
24	415198100	Retainer Pin	2	1048-			
25	415161250	Stopper Pin	6	1048-			H
27	130620030	Spring pin	1	1048-			H
28	130613030	Spring pin	1	1048-			H
29	135013002	Grease Nipple	2	1048-			C,H
30	136402044	Retainer Pin Plug	2	1048-			
35	415197130	Packing Bushing	1	1048-			
36	131220380	Gas Seal	1	1048-			S
37	131225380	Oil Seal	1	1048-			S
38	131230380	Slide Ring S	2	1048-			S
42	131102038	O-Ring	2	1048-			S
43	131102138	O-Ring	1	1048-			S
46	131225381	Oil Seal	1	1048-			S
47	131219380	Dust Seal	1	1048-			S
48	131227401	Buffer Ring	2	1048-			S
52	131102038	O-Ring	2	1048-			S
53	131101045	O-Ring	3	1048-			V,S
54	131121045	Back Up Ring	3	1048-			V,S
55	131101058	O-Ring	1	1048-			S
56	131121058	Back Up Ring	1	1048-			S

Sym	Part Code	Description	Q'ty	Ser.No.	Int	Remarks	Kit
65	415197160	Side Bolt	4	1048-			
66	136306038	Side Bolt Ring	4	1048-			
67	134206038	Side Bolt Nut	4	1048-			
70	415161200	Control Valve	1	1048-			
71	415198211	Control Valve Box	1	1071-	*		
	415198210	Control Valve Box	1	1048-1070			
72	415161220	Control Valve Cap	1	1048-			
73	415161230	Choke Plug	1	1048-			
74	131101063	O-Ring	2	1048-			V,S
75	131121063	Back Up Ring	2	1048-			V,S
76	131102018	O-Ring	1	1048-			V,S
77	131122018	Back Up Ring	1	1048-			V,S
79	131108023	O-Ring	1	1071-			S
80	131506038	Hex Bolt	4	1048-			
81	131313133	Washer	4	1048-			
82	131506039	Hex Bolt	8	1048-			
83	131313133	Washer	8	1048-			
90	41514130J	Gas Valve CP	1CP	1075-	▲		
	41514130E	Gas Valve CP	1CP	1048-1074			
90A	41514130G	Gas Valve Body CP	1CP	1048-			G
90B	41514132E	Gas Valve Plug CP	1CP	1075-			G
91A	41519735A	Hose Adapter IN "PF"	1	1048-		PF1-1/4	
91A	182092380	Hose Adapter IN "UNF"	1	1048-		1-5/8-12UNF	
91B	131108043	O-Ring	1	1048-			S
92A	41519448A	Hose Adapter OUT "PF"	1	1048-		PF1-1/4	
92A	182092381	Hose Adapter OUT "UNF"	1	1048-		1-5/8-12UNF	
92B	131108043	O-Ring	1	1048-			S
96	415198411	Moil Tool	1	1075-	▲	L=1700	
	415198410	Moil Tool	1	1048-1074		L=1540	
	415198421	Blunt Tool		1075-	▲	L=1700	
	415198420	Blunt Tool		1048-1074		L=1540	
	415198431	Chisel Tool		1075-	▲	L=1700	
	415198430	Chisel Tool		1048-1074		L=1540	
	41568180G	Seal Kit	1Set	1071-			
	41568180D	Seal Kit	1Set	1048-1070			

Air Cap CP consists of part marked "A"
 (#17E, 17F, & 17G NOT sold separately)

Seal Kit consists of the parts marked "S".
 (Individual seals NOT sold separately)

Cylinder CP consists of the parts marked "C".

Control Valve Seal Kit consists of parts marked "V"
 (Individual seals NOT sold separately)

Chisel Holder CP consists of the parts marked "H".

Gas Valve CP consists of the parts marked "G"
 (#90A & 90B NOT sold separately)

INT(interchangeability)
 ○ Interchangeable old ↔ new
 △ Interchangeable old → new
 ▲ Interchangeable old ← new
 × Not interchangeable

O-RING is included to #91A & #92A