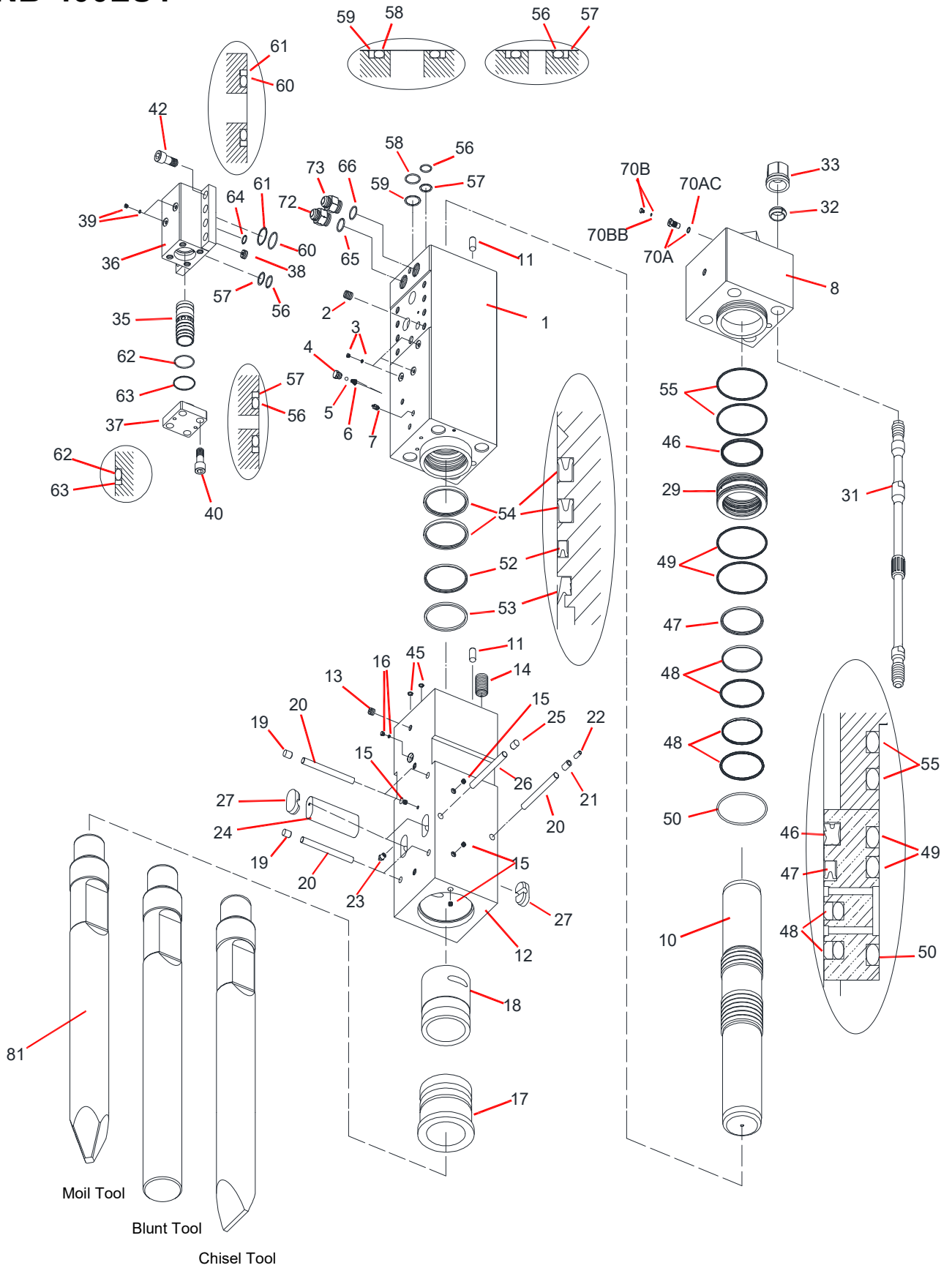


# TNB-400LU1



# Parts

2018.12.20

No.03

| Sym | Part Code | Description               | Q'ty | Ser.No.     | Int | Remarks | Kit |
|-----|-----------|---------------------------|------|-------------|-----|---------|-----|
|     | 41568101S | CYLINDER CP               | 1    | 11093-      | ▲   |         |     |
|     | 41568101R | CYLINDER CP               | 1    | 11075-11092 |     |         |     |
| 1   | 415681013 | CYLINDER                  | 1    | 11093-      | ▲   |         | C   |
|     | 415681012 | CYLINDER                  | 1    | 11075-11092 |     |         | C   |
| 2   | 131033012 | HELISERT                  | 8    | 11075-      |     |         | C   |
| 3   | 134912002 | HEX SOCKET FLANGE PLUG    | 3    | 11075-11092 |     |         | C   |
|     |           | AIR CAP CP                | 1    | 11075-      |     |         | C   |
| 4   | 415143660 | AIR CAP                   | 1    | 11075-      |     |         | A,C |
| 5   | 130505028 | BALL                      | 1    | 11075-      |     |         | A,C |
| 6   | 130806014 | AIR CAP SPRING            | 1    | 11075-      |     |         | A,C |
| 7   | 135013002 | GREASE NIPPLE             | 1    | 11075-      |     |         | C   |
| 8   | 415197031 | CYLINDER COVER            | 1    | 11093-      | ▲   |         |     |
|     | 415197030 | CYLINDER COVER            | 1    | 11075-11092 |     |         |     |
| 10  | 415197041 | PISTON                    | 1    | 11075-      |     |         |     |
| 11  | 415618U30 | LOCK PIN                  | 2    | 11093-      |     |         |     |
|     | 41565705D | CHISEL HOLDER CP          | 1    | 11093-      | ▲   |         |     |
|     | 41565705C | CHISEL HOLDER CP          | 1    | 11075-11092 |     |         |     |
| 12  | 415657051 | CHISEL HOLDER             | 1    | 11093-      | ▲   |         | H   |
|     | 415657050 | CHISEL HOLDER             | 1    | 11075-11092 |     |         | H   |
| 13  | 134901104 | PLUG                      | 1    | 11075-      |     |         | H   |
| 14  | 131064015 | HELISERT                  | 4    | 11075-      |     |         | H   |
| 15  | 134901102 | PLUG                      | 4    | 11075-      |     |         | H   |
| 16  | 182136006 | O-RING PLUG               | 1    | 11075-      |     |         | H   |
| 17  | 415657060 | CHISEL BUSHING            | 1    | 11075-      |     |         | H   |
| 18  | 415161140 | CHISEL HOLDER BUSHING     | 1    | 11075-      |     |         | H   |
| 19  | 136402011 | PLUG                      | 4    | 11075-      |     |         | H   |
| 20  | 415161250 | STOPPER PIN               | 5    | 11075-      |     |         | H   |
| 21  | 130620030 | SPRING PIN                | 1    | 11075-      |     |         | H   |
| 22  | 130613030 | SPRING PIN                | 1    | 11075-      |     |         | H   |
| 23  | 135013002 | GREASE NIPPLE             | 1    | 11075-      |     |         | H   |
| 24  | 415198100 | RETAINER PIN              | 2    | 11075-      |     |         | H   |
| 25  | 136402011 | PLUG                      | 1    | 11075-      |     |         | H   |
| 26  | 415161250 | STOPPER PIN               | 1    | 11075-      |     |         | H   |
| 27  | 136402044 | RETAINER PIN PLUG         | 4    | 11075-      |     |         | H   |
| 29  | 415197130 | PACKING BUSHING           | 1    | 11075-      |     |         |     |
| 31  | 415197160 | SIDE BOLT                 | 4    | 11075-      |     |         |     |
| 32  | 136306038 | SIDE BOLT RING            | 1    | 11075-      |     |         |     |
| 33  | 134206038 | SIDE BOLT NUT             | 4    | 11075-      |     |         |     |
| 35  | 415161200 | CONTROL VALVE             | 4    | 11075-      |     |         |     |
| 36  | 415681210 | CONTROL VALVE BOX         | 4    | 11075-      |     |         |     |
| 37  | 415161221 | CONTROL VALVE CAP         | 1    | 11075-      |     |         |     |
| 38  | 415161230 | CHOKE PLUG                | 1    | 11075-      |     |         |     |
| 39  | 134912002 | HEX SOCKET FLANGE PLUG    | 2    | 11075-      |     |         |     |
| 40  | 131733280 | HEX SOCKET HEAD CAP SCREW | 4    | 11100-      | ▲   |         |     |
|     | 131506038 | HEX BOLT                  | 4    | 11075-11099 |     |         |     |
| 41  | 131313133 | WASHER                    | 0    | 11075-      |     |         |     |
|     | 131313133 | WASHER                    | 4    | 11075-11099 |     |         |     |
| 42  | 131733300 | HEX SOCKET HEAD CAP SCREW | 8    | 11100-      | ▲   |         |     |
|     | 131506039 | HEX BOLT                  | 8    | 11075-11099 |     |         |     |
| 43  | 131313133 | WASHER                    | 0    | 11100-      |     |         |     |
|     | 131313133 | WASHER                    | 8    | 11075-11099 |     |         |     |
|     | 41568180G | SEAL KIT                  | 1    | 11075-      |     |         |     |
| 45  | 131101013 | O-RING                    | 2    | 11075-      |     |         | S   |
| 46  | 131220380 | GAS SEAL                  | 1    | 11075-      |     |         | S   |
| 47  | 131225380 | OIL SEAL                  | 1    | 11075-      |     |         | S   |

| Sym  | Part Code | Description                                  | Q'ty | Ser.No.     | Int | Remarks     | Kit |
|------|-----------|--|------|-------------|-----|-------------|-----|
| 48   | 131230380 | SLIDE RING S                                 | 2    | 11075-      |     |             | S   |
| 49   | 131102038 | O-RING                                       | 2    | 11075-      |     |             | S   |
| 50   | 131102138 | O-RING                                       | 1    | 11075-      |     |             | S   |
| 52   | 131225381 | OIL SEAL                                     | 1    | 11075-      |     |             | S   |
| 53   | 131219380 | DUST SEAL                                    | 1    | 11075-      |     |             | S   |
| 54   | 131227401 | BUFFER RING                                  | 2    | 11075-      |     |             | S   |
| 55   | 131102038 | O-RING                                       | 2    | 11075-      |     |             | S   |
| 56   | 131101045 | O-RING                                       | 3    | 11075-      |     |             | V,S |
| 57   | 131121045 | BACK-UP RING                                 | 3    | 11075-      |     |             | V,S |
| 58   | 131101058 | O-RING                                       | 1    | 11075-      |     |             | S   |
| 59   | 131121058 | BACK-UP RING                                 | 1    | 11075-      |     |             | S   |
| 60   | 131101063 | O-RING                                       | 2    | 11075-      |     |             | V,S |
| 61   | 131121063 | BACK-UP RING                                 | 2    | 11075-      |     |             | V,S |
| 62   | 131102018 | O-RING                                       | 1    | 11075-      |     |             | V,S |
| 63   | 131122018 | BACK-UP RING                                 | 1    | 11075-      |     |             | V,S |
| 64   | 131108023 | O-RING                                       | 1    | 11075-      |     |             | S   |
| 65   | 131108043 | O-RING                                       | 1    | 11075-      |     |             | S   |
| 66   | 131108043 | O-RING                                       | 1    | 11075-      |     |             | S   |
|      | 41514130K | GAS VALVE CP                                 | 1    | 11083-      | ▲   |             |     |
|      | 41514130J | GAS VALVE CP                                 | 1    | 11075-11082 |     |             |     |
| 70A  | 41514130L | GAS VALVE BODY CP                            | 1    | 11083-      | ▲   |             | G   |
|      | 41514130G | GAS VALVE BODY CP                            | 1    | 11075-11082 |     |             | G   |
| 70AC | 131101015 | O-RING                                       | 1    | 11075-      |     |             | G   |
| 70B  | 41514132E | GAS VALVE PLUG CP                            | 1    | 11075-      |     |             | G   |
| 70BB | 131101004 | O-RING                                       | 1    | 11075-      |     |             | G   |
| 72   | 182092380 | HOSE ADAPTER IN (1-5/8-12UNF) (WITH O-RING)  | 1    | 11075-      |     | 1-5/8-12UNF |     |
| 73   | 182092381 | HOSE ADAPTER OUT (1-5/8-12UNF) (WITH O-RING) | 1    | 11075-      |     | 1-5/8-12UNF |     |
| 81   | 415198412 | MOIL TOOL 178x1700L                          | 1    | 11086-      | ▲   | L=1700      |     |
|      | 415198411 | MOIL TOOL 178x1700L                          | 1    | 11075-11085 |     | L=1700      |     |
|      | 415198422 | BLUNT TOOL 178x1700L                         | 0    | 11086-      | ▲   | L=1700      |     |
|      | 415198421 | BLUNT TOOL 178x1700L                         | 0    | 11075-11085 |     | L=1700      |     |
|      | 415198432 | CHISEL TOOL 178x1700L                        | 0    | 11086-      | ▲   | L=1700      |     |
|      | 415198431 | CHISEL TOOL 178x1700L                        | 0    | 11075-11085 |     | L=1700      |     |

Air Cap CP consists of part marked "A"  
(#4, 5, & 6 NOT sold separately)

Seal Kit consists of the parts marked "S".  
(Individual seals NOT sold separately)

Cylinder CP consists of the parts marked "C".

Contral Valve Seal Kit consists of parts marked "V"  
(Individual seals NOT sold separately)

Chisel Holder CP consists of the parts marked "H".

Gas Valve CP consists of the parts marked "G"  
(#70A, 70AC & 70BB NOT sold separately)

INT(interchangeability)  
○ Interchangeable old ↔ new  
△ Interchangeable old → new  
▲ Interchangeable old ← new  
× Not interchangeable

O-RING is included to #72 & #73