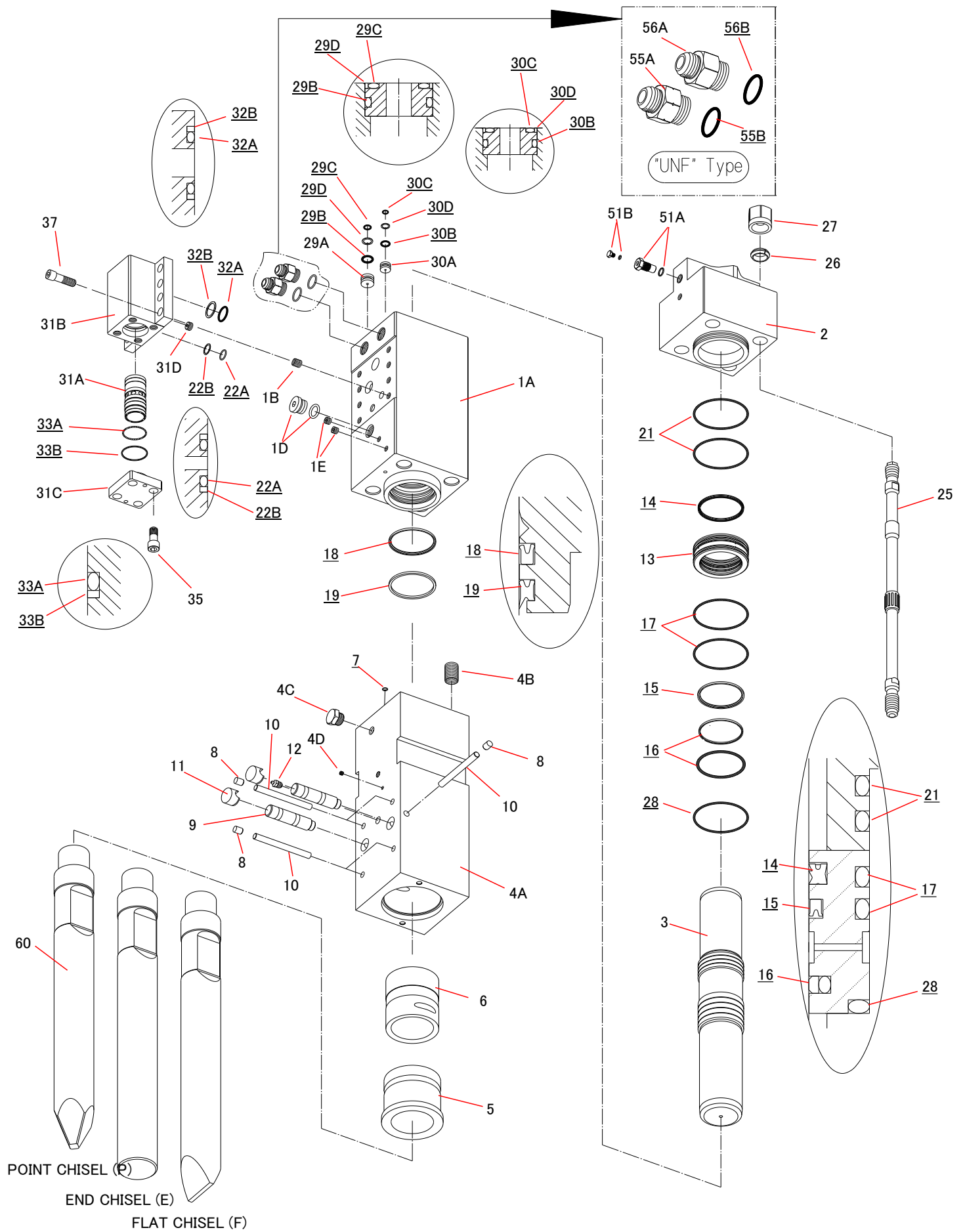


TNB-6E



Parts

2017.04.28

No.6

Sym	Part Code	Description	Q'ty	Ser.No.	Int	Remarks	Kit
	41512701G	Cylinder CP	1CP	10055~	o		
	41512701C	Cylinder CP	1CP	6400~10054			
1A	415127013	Cylinder	1	10055~	x		C
	415127012	Cylinder	1	6400~10054			C
1B	131019013	Helisert	8	6400~			C
1D	134912008	Hex Socket Flange Plug	1	10055~	x		C
	134901108	Hex Plug	1	6400~10054			C
1E	134901102	Hex Plug	2	6400~			C
2	415127030	Cylinder Cover	1	6400~			
3	415127040	Piston	1	6400~			
	41512705D	Chisel Holder CP	1CP	6400~			
4A	415127051	Chisel Holder	1	6400~			H
4B	131027015	Helisert	4	6400~			H
4C	182135015	Plug	1	6400~			H
4D	134901102	Hex Plug	1	6400~			H
5	415127060	Chisel Bushing	1	6400~			H
6	415123140	Chisel Holder Bushing	1	6400~			H
7	131101010	O-Ring	1	6400~			S
8	136402012	Plug	5	6400~			H
9	415123100	Retainer Pin	2	6400~			
10	415121110	Stopper Pin	5	6400~			H
11	136402036	Retainer Pin Plug	2	6400~			
12	135013001	Grease Nipple	1	6400~			H
13	415127130	Packing Bushing	1	6400~			
14	131220060	Gas Seal	1	6400~			S
15	131225060	Oil Seal	1	6400~			S
16	131230060	Slide Ring S	1	6400~			S
17	131102018	O-Ring	2	6400~			S
18	131225062	Oil Seal	1	11549~	▲		S
	131225061	Oil Seal	1	6400~11548			S
19	131219063	Dust Seal	1	11549~	▲		S
	131219060	Dust Seal	1	6400~11548			S
21	131102018	O-Ring	2	6400~			S
22A	131101027	O-Ring	2	6400~			S,V
22B	131121027	Back Up Ring	2	6400~			S,V
25	415127160	Side Bolt	4	6400~			
26	136306003	Side Bolt Ring	4	6400~			
27	134206006	Side Bolt Nut	4	6400~			
28	131102118	O-Ring	1	6400~			S
29A	415127290	Cylinder Plug	1	6400~			
29B	131108022	O-Ring	1	6400~			S
29C	131101020	O-Ring	1	6400~			S
29D	131121020	Back Up Ring	1	6400~			S
30A	415127300	Cylinder Plug	1	6400~			
30B	131108016	O-Ring	1	6400~			S
30C	131101015	O-Ring	1	6400~			S
30D	131121015	Back Up Ring	1	6400~			S
31A	415127200	Control Valve	1	6400~			
31B	415127211	Control Valve Box	1	6400~			
31C	415127220	Control Valve Cap	1	6400~			
31D	415127230	Choke Plug	1	6400~			
32A	131101045	O-Ring	2	6400~			S,V
32B	131121045	Back Up Ring	2	6400~			S,V

Sym	Part Code	Description	Q'ty	Ser.No.	Int	Remarks	Kit
33A	131102007	O-Ring	1	6400~			S,V
33B	131123007	Back Up Ring	1	6400~			S,V
35	131719040	Hex Socket Head Cap Screw	4	11320~	▲		
	131506007	Hex Bolt	4	6400~11319			
36	131313120	Washer	0	11320~			
	131313120	Washer	4	6400~11319			
37	131719065	Hex Socket Head Cap Screw	8	11320~	▲		
	131506006	Hex Bolt	8	6400~11319			
38	131313120	Washer	0	11320~			
	131313120	Washer	8	6400~11319			
51	41514130K	Gas Valve CP	1CP	11443~	▲		
	41514130J	Gas Valve CP	1CP	10198~11442	▲		
	41514130E	Gas Valve CP	1CP	6400~10197			
51A	41514130L	Gas Valve Body CP	1CP	11443~	▲		G
	41514130G	Gas Valve Body CP	1CP	6400~11442			G
51B	41514132E	Gas Valve Plug CP	1CP	10198~			G
55A	182092060	Hose Adapter IN "UNF"	1	6400~		1-1/16-12UNF	
55B	131108028	O-Ring	1	6400~			S
56A	182092061	Hose Adapter OUT "UNF"	1	6400~		1-1/16-12UNF	
56B	131108028	O-Ring	1	6400~			S
60	415121410	Point Chisel (P)	1	6400~		L=900	
61	415121420	End Chisel (E)		6400~		L=900	
62	415121430	Flat Chisel (F)		6400~		L=900	
	41512780K	Master Seal Kit	1Set	11549~	▲		
	41512780H	Master Seal Kit	1Set	6400~11548			
	41512780G	Control Valve Seal Kit	1Set	6400~			

Master Seal Kit consists of the parts marked "S".
(Individual seal NOT sold separately)

Control Valve Seal Kit consists of parts marked "V".
(Individual seals NOT sold separately)

Cylinder CP consists of the parts marked "C".

Chisel Holder CP consists of the parts marked "H".
Quantity of the item #8 & 10 required for this CP is 4.

Gas Valve CP consists of the parts marked "G".

O-RING is included to #55A & #56A UNF type HOSE ADAPTER.
(UNF type HOSE ADAPTER is not supplied as bare condition. O-ring always comes together)

INT(interchangeability)

- Interchangeable old ↔ new
- △ Interchangeable old → new
- ▲ Interchangeable old ← new
- × Not interchangeable