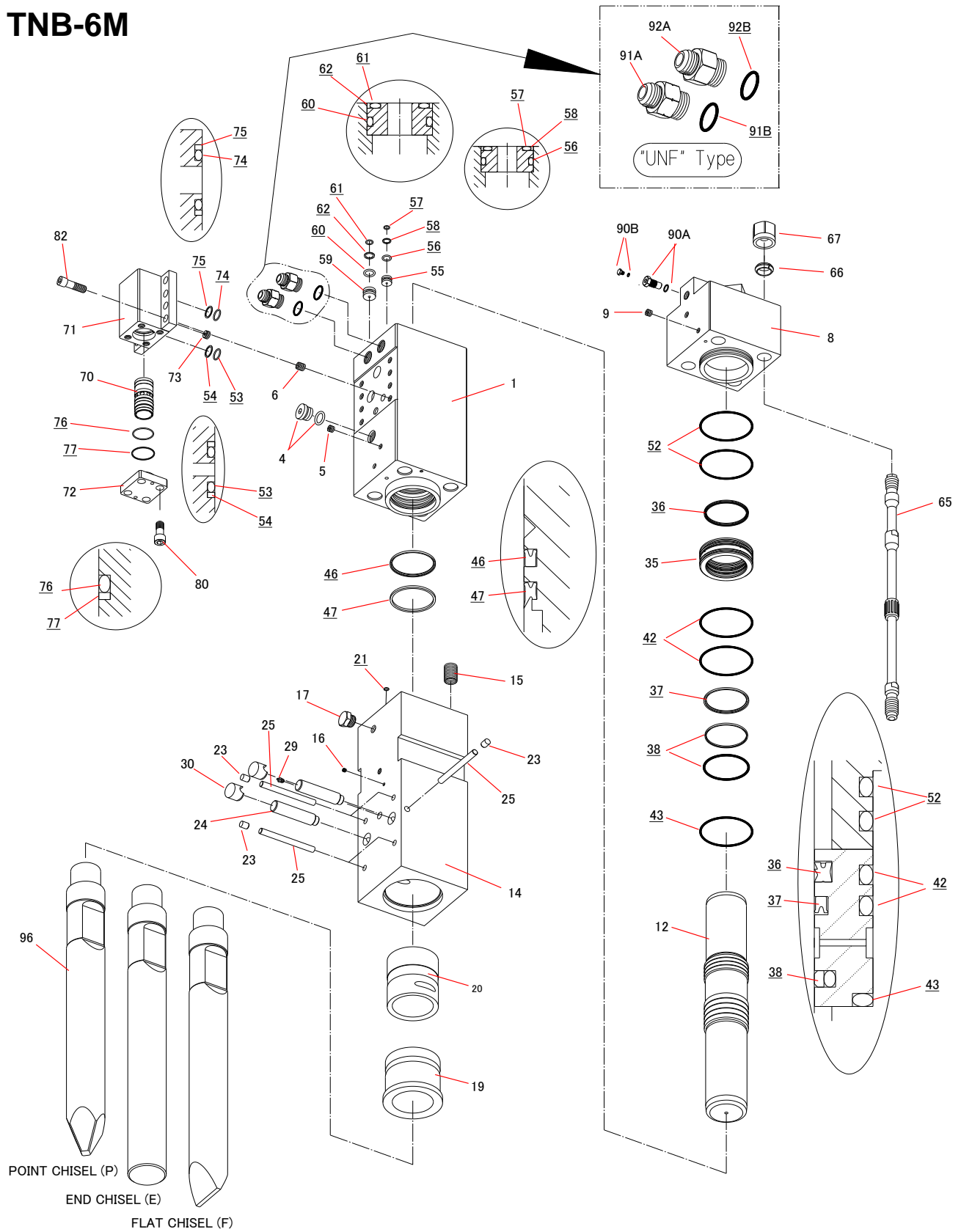


TNB-6M



POINT CHISEL (P)
 END CHISEL (E)
 FLAT CHISEL (F)

TNB-6M

Sym	Part Code	Description	Q'ty	Ser.No.	Int	Remarks	Kit	Sym	Part Code	Description	Q'ty	Ser.No.	Int	Remarks	Kit
	41517501G	Cylinder CP	1CP	10011~	○			67	134206006	Side Bolt Nut	4	139~			
	41517501C	Cylinder CP	1CP	139~10010				70	415175200	Control Valve	1	139~			
1	415175011	Cylinder	1	10011~	×		C	71	415120211	Control Valve Box	1	139~			
	415175010	Cylinder	1	139~10010			C	72	415120220	Control Valve Cap	1	139~			
4	134912008	Hex Socket Flange Plug	1	10011~	×		C	73	415175230	Choke Plug	1	139~			
	134901108	Hex Plug	1	139~10010			C	74	131101042	O-Ring	2	139~			S
5	134901102	Hex Plug	1	139~			C	75	131121042	Back Up Ring	2	139~			S
6	131016015	Helisert	8	139~			C	76	131102006	O-Ring	1	139~			S
8	415175031	Cylinder Cover	1	139~				77	131123006	Back Up Ring	1	139~			S
9	134901102	Hex Plug	1	139~				80	131716036	Hex Socket Head Cap Screw	4	10500~	▲		
12	415175040	Piston	1	139~					131506042	Hex Bolt	4	139~10499			
	41517505D	Chisel Holder CP	1CP	139~				81	131313116	Washer	0	10500~			
14	415175050	Chisel Holder	1	139~			H		131313116	Washer	4	139~10499			
15	131027015	Helisert	4	139~			H	82	131716046	Hex Socket Head Cap Screw	8	10500~	▲		
16	134901101	Hex Plug	1	139~			H		131506041	Hex Bolt	8	139~10499			
17	182135015	Plug	1	139~			H	83	131313116	Washer	0	10500~			
19	415120060	Chisel Bushing	1	139~			H		131313116	Washer	8	139~10499			
20	415117140	Chisel Holder Bushing	1	139~			H	90	41514130K	Gas Valve CP	1CP	10543~	▲		
21	131101005	O-Ring	1	139~			S		41514130J	Gas Valve CP	1CP	10110~10542	▲		
23	136402012	Plug	5	139~			H		41514130E	Gas Valve CP	1CP	139~10109			
24	415118100	Retainer Pin	2	139~				90A	41514130L	Gas Valve Body CP	1CP	10543~	▲		G
25	415118110	Stopper Pin	5	139~			H		41514130G	Gas Valve Body CP	1CP	139~10542			G
29	135013001	Grease Nipple	1	139~			H	90B	41514132E	Gas Valve Plug CP	1CP	10110~			G
30	136402035	Retainer Pin Plug	2	139~				91A	182092040	Hose Adapter IN "UNF"	1	139~			1-1/16-12UNF
35	415120130	Packing Bushing	1	139~				91B	131108023	O-Ring	1	139~			S
36	131220040	Gas Seal	1	139~			S	92A	182092041	Hose Adapter OUT "UNF"	1	139~			1-1/16-12UNF
37	131225040	Oil Seal	1	139~			S	92B	131108023	O-Ring	1	139~			S
38	131230040	Slide Ring S	1	139~			S								
42	131102015	O-Ring	2	139~			S	96	415118412	Point Chisel (P)	1	10322~	▲		L=800
43	131102115	O-Ring	1	139~			S		415118410	Point Chisel (P)	1	139~10321			L=710
46	131225042	Oil Seal	1	10571~	▲		S		415118422	End Chisel (E)		10322~	▲		L=800
	131225041	Oil Seal	1	139~10570			S		415118420	End Chisel (E)		139~10321			L=710
47	131219042	Dust Seal	1	10571~	▲		S		415118432	Flat Chisel (F)		10322~	▲		L=800
	131219040	Dust Seal	1	139~10570			S		415118430	Flat Chisel (F)		139~10321			L=710
52	131102015	O-Ring	2	139~			S								
53	131101027	O-Ring	2	139~			S		41517580K	Seal Kit	1Set	10571~	▲		
54	131121027	Back Up Ring	2	139~			S		41517580D	Seal Kit	1Set	139~10570			
55	415127300	Cylinder Plug	1	139~											
56	131108016	O-Ring	1	139~			S								
57	131101015	O-Ring	1	139~			S								
58	131121015	Back Up Ring	1	139~			S								
59	415127290	Cylinder Plug	1	139~											
60	131108022	O-Ring	1	139~			S								
61	131101020	O-Ring	1	139~			S								
62	131121020	Back Up Ring	1	139~			S								
65	415175160	Side Bolt	4	139~											
66	136306003	Side Bolt Ring	4	139~											

Seal Kit consists of the parts marked "S".
(Individual seals NOT sold separately)

Cylinder CP consists of the parts marked "C".

Chisel Holder CP consists of the parts marked "H".
Quantity of the item #23 & 25 required for this CP is 4.

Gas Valve CP consists of the parts marked "G"
(#90A NOT sold separately)

O-RING is included to #91A & #92A UNF type HOSE ADAPTER.
(UNF type HOSE ADAPTER is not supplied as bare condition. O-ring always comes together.)

INT(interchangeability)
○ Interchangeable old ⇔ new
△ Interchangeable old → new
▲ Interchangeable old ← new
× Not interchangeable