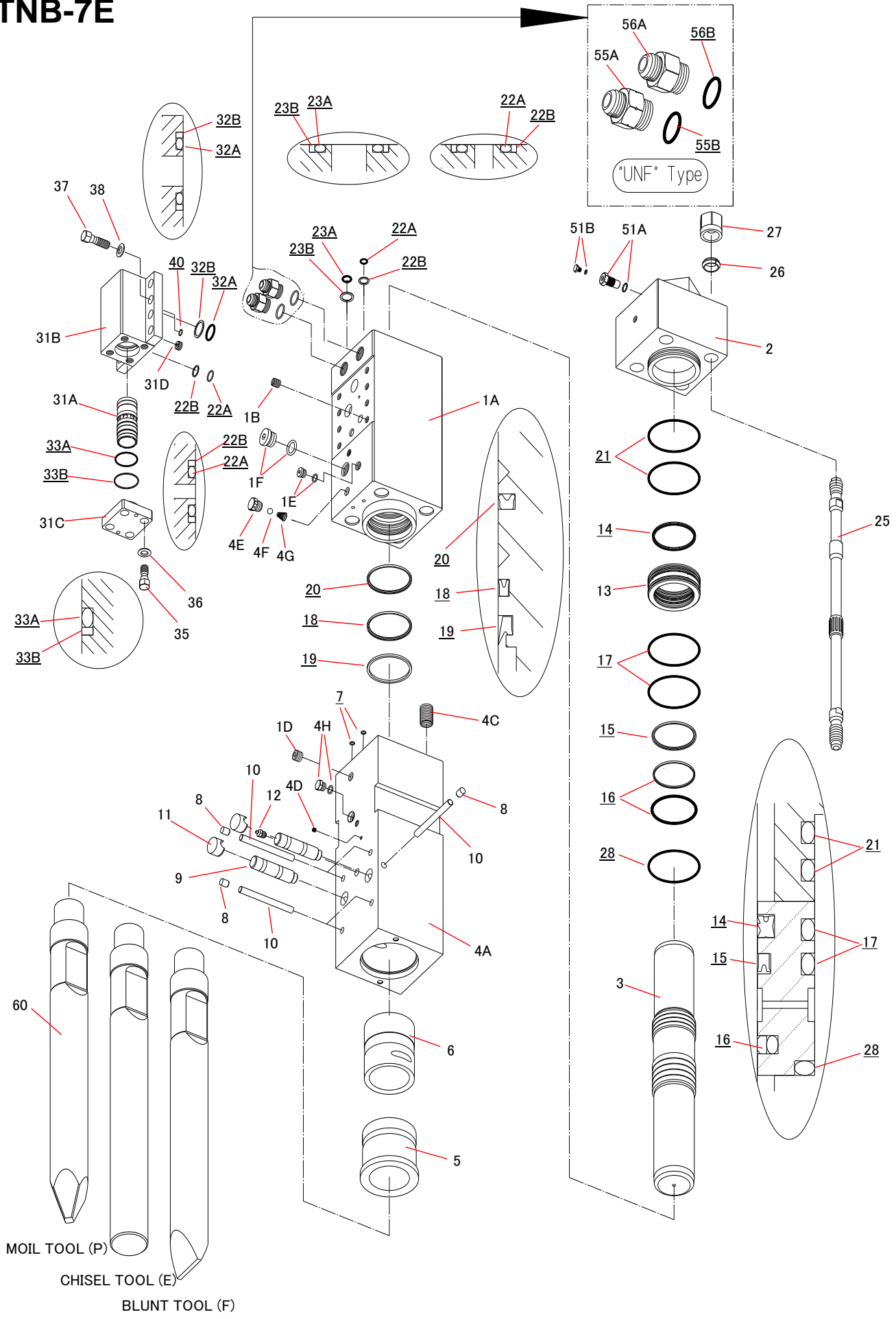


TNB-7E



MOIL TOOL (P)
 CHISEL TOOL (E)
 BLUNT TOOL (F)

Parts

2015.01.23

No.9

Sym	Part Code	Description	Q'ty	Ser.No.	Int	Remarks	Kit
	41513201K	Cylinder CP	1CP	7793~	x		
	41513201J	Cylinder CP	1CP	7694~7792	o		
	41513201H	Cylinder CP	1CP	7610~7693	x		
	41513201G	Cylinder CP	1CP	6742~7609	o		
	41513201C	Cylinder CP	1CP	6144~6741			
1A	415132020	Cylinder	1	7793~	x		C
	415132019	Cylinder	1	7694~7792	x		C
	415132018	Cylinder	1	7610~7693	x		C
	415132017	Cylinder	1	6742~7609	x		C
	415132016	Cylinder	1	6144~6741			C
1B	131019013	Helisert	8	6144~			C
1D	134901104	Hex plug	1	7793~			H
	134901104	Hex plug	2	7610~7792			C,H
	134901104	Hex plug	1	6144~7609			C
1E	134912002	Hex Socket Flange plug	1	6144~			C
1F	134912010	Hex Socket Flange plug	1	7694~			C
	134901110	Hex plug	1	6742~7693			C
2	415132030	Cylinder Cover	1	6144~			
3	415132040	Piston	1	6144~			
	41513205H	Chisel Hoder CP	1CP	7610~			
	41513205D	Chisel Hoder CP	1CP	6144~7609			
4A	415132057	Chisel Holder	1	7610~			H
	415132056	Chisel Holder	1	6144~7609			H
4C	131036015	Helisert	4	6144~			H
4D	134901101	Hex plug	1	6144~			H
	41514366A	Air Cap CP	1	6144~			
4E	415143660	Air Cap	1	7610~			A,C
	415143660	Air Cap	1	6144~7609			A,H
4F	130505028	Ball	1	7610~			A,C
	130505028	Ball	1	6144~7609			A,H
4G	130806014	Air Cap Spring	1	7610~			A,C
	130806014	Air Cap Spring	1	6144~7609			A,H
4H	182136006	O-Ring Plug	1	6144~			H
5	415132060	Chisel Bushing	1	6144~			H
6	415133140	Chisel Holder Bushing	1	6144~			H
7	131101010	O-Ring	2	7610~			S
	131101010	O-Ring	1	6144~7609			S
8	136402011	Plug	5	6144~			H
9	415128100	Retainer Pin	2	6144~			
10	415128250	Stopper Pin	5	6144~			H
11	136402037	Retainer Pin Plug	2	6144~			
12	135013002	Grease Nipple	1	6144~			H
13	415132130	Packing Bushing	1	6144~			
14	131220070	Gas Seal	1	6144~			S
15	131225070	Oil Seal	1	6144~			S
16	131230070	Slide Ring S	1	6144~			S
17	131101078	O-Ring	2	6144~			S
18	131225071	Oil Seal	1	6144~			S
19	131219070	Dust Seal	1	6144~			S
20	131227071	Buffer Ring	1	6144~			S
21	131101078	O-Ring	2	6144~			S
22A	131101029	O-Ring	3	6144~			S,V
22B	131121029	Back Up Ring	3	6144~			S,V
23A	131101042	O-Ring	1	6144~			S
23B	131121042	Back Up Ring	1	6144~			S
25	415132160	Side Bolt	4	6144~			

Sym	Part Code	Description	Q'ty	Ser.No.	Int	Remarks	Kit
26	136306001	Side Bolt Ring	4	6144~			
27	134206020	Side Bolt Nut	4	6144~			
28	131108078	O-Ring	1	6144~			S
31A	415132200	Control Valve	1	6144~			
31B	415132211	Control Valve Box	1	7793~	x		
	415132210	Control Valve Box	1	6144~7792			
31C	415132220	Control Valve Cap	1	6144~			
31D	415132230	Choke Plug	1	6144~			
32A	131101048	O-Ring	2	6144~			S,V
32B	131121048	Back Up Ring	2	6144~			S,V
33A	131102008	O-Ring	1	6144~			S,V
33B	131122008	Back Up Ring	1	6144~			S,V
35	131506007	Hex Bolt	4	6144~			
36	131313120	Washer	4	6144~			
37	131506006	Hex Bolt	8	6144~			
38	131313120	Washer	8	6144~			
40	131108023	O-Ring	1	7793~			S
51	41514130J	Gas Valve CP	1CP	10046~	▲		
	41514130E	Gas Valve CP	1CP	6144~10045			
51A	41514130G	Gas Valve Body CP	1CP	6144~			G
51B	41514132E	Gas Valve Plug CP	1CP	10046~			G
55A	182092070	Hose Adapter IN "UNF"	1	6144~		1-1/16-12UNF	
55B	131108028	O-Ring	1	6144~			S
56A	182092071	Hose Adapter OUT "UNF"	1	6144~		1-1/16-12UNF	
56B	131108028	O-Ring	1	6144~			S
60	415133412	Moil Tool (P)	1	10001~	▲	L=1050	
	415133410	Moil Tool (P)	1	6144~10000		L=930	
61	415133422	Chisel Tool (E)		10001~	▲	L=1050	
	415133420	Chisel Tool (E)		6144~10000		L=930	
62	415133432	Blunt Tool (F)		10001~	▲	L=1050	
	415133430	Blunt Tool (F)		6144~10000		L=930	
	41513280P	Master Seal Kit	1Set	7793~	▲		
	41513280N	Master Seal Kit	1Set	7694~7792	▲		
	41513280L	Master Seal Kit	1Set	7610~7693	▲		
	41513280D	Master Seal Kit	1Set	6144~7609			
	41513280G	Control Valve Seal Kit	1Set	6144~			

Air Cap CP consists of part marked "A"
 (#4E, 4F, & 4G NOT sold separately)

Cylinder CP consists of the parts marked "C".

Chisel Holder CP consists of the parts marked "H".
 Quantity of the item #8 & 10 required for this CP is 4.

The Plug (No. 1E, 1F, 4H) includes O-ring. (Supplied as Kit ONLY)

Gas Valve CP consists of the parts marked "G". (Item #51A NOT sold separately)

O-RING is included to #55A & #56A UNF type HOSE ADAPTER.
 (HOSE ADAPTER is not supplied as bare condition. O-ring always comes together)

Master Seal Kit consists of the parts marked "S".
 (Individual seals NOT sold separately)

INT(interchangibility)

- Interchangeable old ↔ new
- △ Interchangeable old → new
- ▲ Interchangeable old ← new
- × Not interchangeable

Control Valve Seal Kit consists of parts marked "V"
 (Individual seals NOT sold separately)