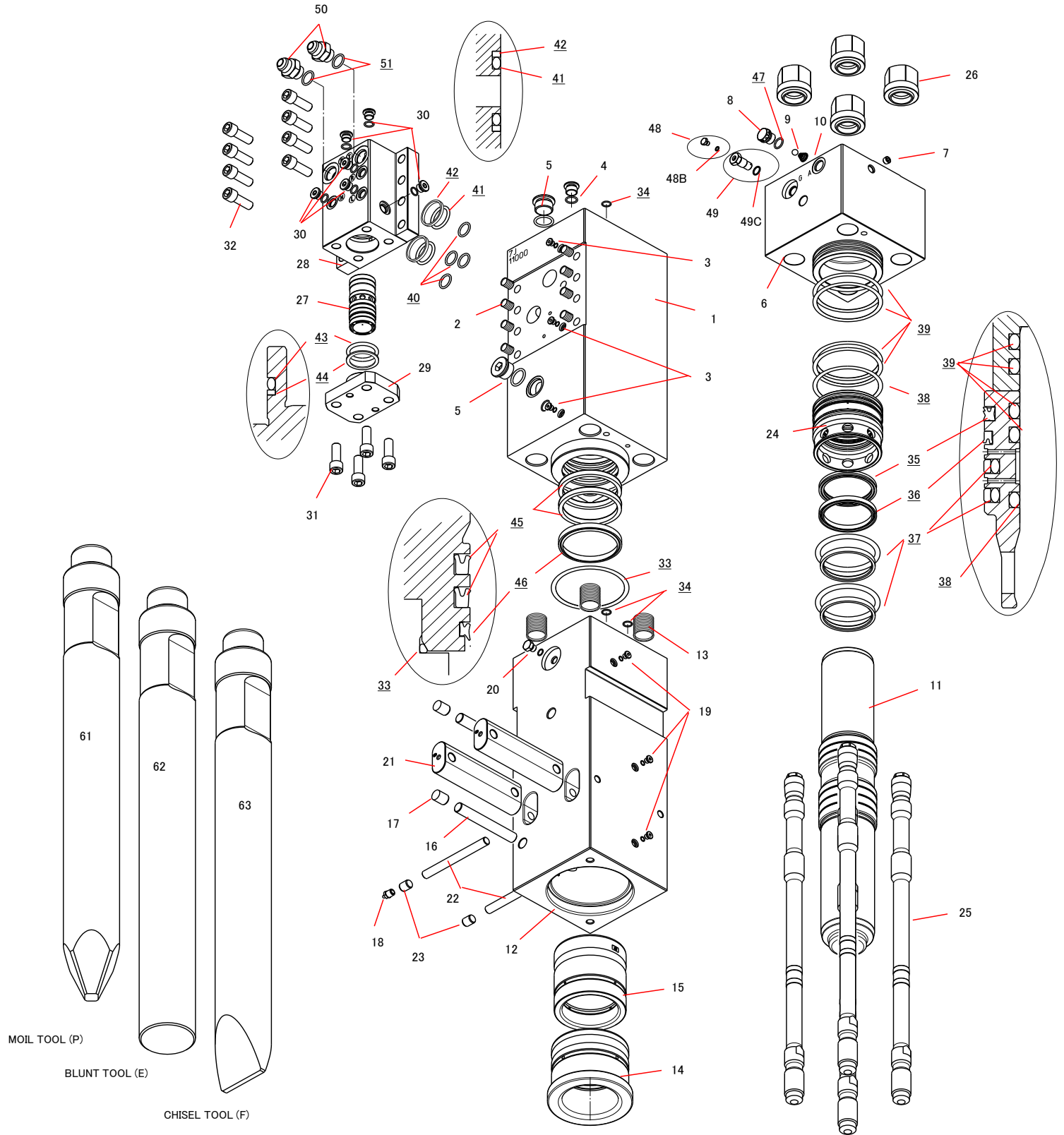


TNB-7J



Parts

2017.07.06

No.6

Sym	Part Code	Description	Q'ty	Ser.No.	Int	Remarks	Kit
	41562001C	CYLINDER CP	1	1011~			
1	415620010	CYLINDER	1	1011~			C
2	131016010	HELISERT	8	1011~			C
3	134912001	HEX SOCKET FLANGE PLUG	3	1011~			C
4	134912004	HEX SOCKET FLANGE PLUG	1	1011~			C
5	134912008	HEX SOCKET FLANGE PLUG	2	1011~			C
6	415620030	CYLINDER COVER	1	1011~			
7	134901102	PLUG	1	1011~			
	41514366A	AIR CAP CP	1	1011~			
8	415143665	AIR CAP	1	1011~			A
9	130505028	BALL	1	1011~			A
10	130806014	AIR CAP SPRING	1	1011~			A
11	415620040	PISTON	1	1011~			
	41562005D	CHISEL HOLDER CP	1	1011~	▲		
	41562005C	CHISEL HOLDER CP	1	1011~10275			
12	415620051	CHISEL HOLDER	1	11001~	x		H
	415620050	CHISEL HOLDER	1	1011~10275			H
13	131036015	HELISERT	4	1011~			H
14	415620060	CHISEL BUSHING	1	1011~			H
15	415620140	CHISEL HOLDER BUSHING	1	1011~			H
16	415620250	STOPPER PIN	2	1011~			H
17	136402011	PLUG	2	1011~			H
18	135013002	GREASE NIPPLE	1	1011~			H
19	134912001	HEX SOCKET FLANGE PLUG	3	1011~			H
20	182136006	O-RING PLUG	1	1011~			H
21	415620100	RETAINER PIN	2	1011~			
22	415620271	STOPPER PIN	2	11001~	x		
	415620270	STOPPER PIN	2	1011~10275			
23	136402014	PLUG	2	11001~	x		
	415620E90	RETAINER PIN CAP	2	1011~10275			
24	415620130	PACKING BUSHING	1	1011~			
25	415620161	SIDE BOLT	4	12037~	▲		
	415620160	SIDE BOLT	4	1011~12036			
26	134206051	SIDE BOLT NUT	4	1011~			
27	415620200	CONTROL VALVE	1	1011~			
28	415620210	CONTROL VALVE BOX	1	1011~			
29	415620221	CONTROL VALVE CAP	1	11530~	▲		
	415620220	CONTROL VALVE CAP	1	1011~11529			
30	134912003	HEX SOCKET FLANGE PLUG	6	1011~			
31	131716046	BOLT	4	1011~			
32	131716051	BOLT	8	1011~			
33	131102124	O-RING	1	1011~			S
34	131101013	O-RING	3	1011~			S
35	131220071	GAS SEAL	1	1011~			S
36	131225073	OIL SEAL S	1	1011~			S
37	131230071	SLIDE RING S	2	1011~			S
38	131108074	O-RING	1	1011~			S
39	131101074	O-RING	4	1011~			S

Sym	Part Code	Description	Q'ty	Ser.No.	Int	Remarks	Kit
40	131108023	O-RING	4	1011~			S
41	131101048	O-RING	2	1011~			S
42	131121048	BACK-UP RING	2	1011~			S
43	131102007	O-RING	1	1011~			S
44	131123007	BACK-UP RING	1	1011~			S
45	131225075	OIL SEAL	2	11883~	▲		S
	131225074	OIL SEAL	2	11486, 11496~11882	▲		S
	131225072	OIL SEAL	2	1011~11495, (Exct 11486)			S
46	131219073	DUST SEAL	1	11883~	▲		S
	131219072	DUST SEAL	1	11486, 11496~11883	▲		S
	131219071	DUST SEAL	1	1011~11495, (Exct 11486)			S
47	131101017	O-RING	1	1011~			S
	41514130K	GAS VALVE CP	1	11901~	▲		
	41514130J	GAS VALVE CP	1	10070~11900	▲		
	41514130E	GAS VALVE CP	1	1011~10069			
48	41514132E	GAS VALVE PLUG CP	1	10070~	▲		G
	41514132A	GAS VALVE PLUG CP	1	1011~10069			G
48B	131101004	O-RING	1	1011~			G
49	41514130L	GAS VALVE BODY CP	1	11901~	▲		G
	41514130G	GAS VALVE BODY CP	1	1011~11900			G
49C	131101015	O-RING	1	1011~			G
50	415800340	PORT ADAPTER	2	1011~		1-1/16-12UNF	
51	131108023	O-RING	2	1011~			
61	415620411	MOIL TOOL (P) 105x1050L	1	1011~	▲	L=1050	
62	415620421	BLUNT TOOL (E) 105x1050L	0	1011~	▲	L=1050	
63	415620431	CHISEL TOOL (F) 105x1050L	0	1011~	▲	L=1050	
	41562080F	SEAL KIT	1	11883~	▲		
	41562080E	SEAL KIT	1	11486, 11496~11882	▲		
	41562080D	SEAL KIT	1	1011~11495, (Exct 11486)			

Air Cap CP consists of part marked "A"
 (#8, 9, & 10 NOT sold separately)

Seal Kit consists of the parts marked "S".
 (Individual seals NOT sold separately)

Cylinder CP consists of the parts marked "C".

Chisel Holder CP consists of the parts marked "H".

For US type bracket, the following parts are not used.
 2 pc of #22 Stopper Pin, 2 pc of #23 Plug.

Gas Valve CP consists of the parts marked "G".
 Item #48B, 49 & 49C NOT sold separately

O-RING is included to #50 UNF type HOSE ADAPTER.
 Item #51 NOT sold separately)

INT(interchangeability)

○ Interchangeable old ↔ new

△ Interchangeable old → new

▲ Interchangeable old ← new

× Not interchangeable